

**Longacre®**



**Racing Products**



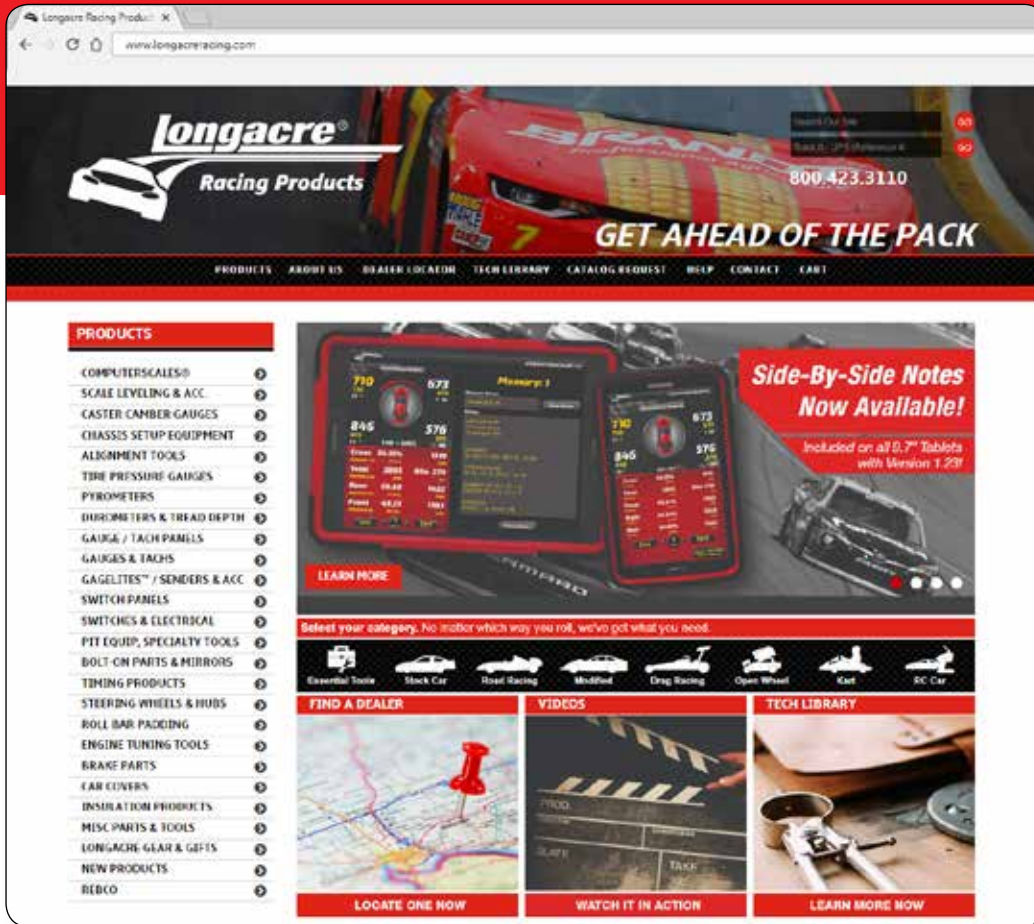
**THE CHOICE  
OF PROFESSIONALS**

**2019**

NASCAR® Xfinity® Series.  
Photos courtesy of JR Motorsports and Harold Hinson Photography.



**VISIT US ONLINE...**  
**[www.LongacreRacing.com](http://www.LongacreRacing.com)**



**Online Catalog**

Everything you need to know about Longacre® products: photos, detailed product descriptions, instructions and tech tips.

**Tech Library**

Helpful tech information on a variety of racing topics.

**Find A Dealer**

Need help finding a Longacre® part? Use our Online Dealer Locator to find a distributor near you.

***CHECK OUT OUR NEW TECH VIDEOS ONLINE!***



[www.LongacreRacing.com/videos.aspx](http://www.LongacreRacing.com/videos.aspx)

***CONTACT US***

**Business Hours**

Monday - Friday  
 8 a.m. - 5 p.m. CST

**Phone**

800.423.3110  
 360.453.2030

**Service Department**

800.423.3110

**Fax Number**

360.453.2031

**Address**

977 Hyrock Blvd.  
 Boonville, IN 47601

**Service Department Address**

101 E Main Street, Suite 206  
 Monroe, WA 98272

# CONTENTS

## 2019 LONGACRE® CATALOG

### 4 FEATURED PRODUCTS

### 8 SCALES & ACCESSORIES

- 8 Computerscales®
- 11 Computerscales®: DX3™ & DX2™
- 12 Computerscales®: Karting
- 13 Computerscales®: AccuSet II™
- 14 Computerscales®: Dual Load Cell
- 15 Scale Storage
- 16 Coil Spring Tester
- 17 Spring Rubber
- 18 Chassis Height Measurement
- 19 SideSliders™
- 20 Platen Setup & Turnplates
- 21 Billet Levelers
- 22 Leveling Accessories

### 25 CHASSIS SETUP EQUIPMENT

- 25 Caster/Camber Digital Gauges
- 26 Caster/Camber Digital Gauge Adapters
- 27 Caster/Camber Billet Gauges
- 28 Caster/Camber Accessories
- 29 Toe-In Plates & Accessories
- 31 Bump Steer Gauges & Accessories
- 32 Stagger Gauges

### 33 TIRE MANAGEMENT

- 33 Tire Pressure Gauges Quick Guide
- 34 Tire Pressure Gauges: Digital
- 37 Tire Pressure Gauges: Pro & Magnum™
- 38 Tire Pressure Gauges: Liquid & Deluxe
- 39 Tire Pressure Gauges: Basic & Quick Fill
- 40 TIRELIEFS™ & Accessories
- 41 Durometers
- 42 Pyrometers
- 44 Air Tanks & Accessories

### 45 GAUGES, TACHS, PANELS, & ELECTRICAL

- 45 Stepper Motor & Sportsman™ Gauges
- 46 Memory Tachs & Tach Panels
- 47 SMI™ Panels & Accessories
- 49 Sportsman™ Gauges Panels
- 51 Switch Panels
- 52 Switches: 40 Amp
- 54 Switch Accessories

### 56 SPECIALTY TOOLS

- 56 Air Density Gauge
- 57 Leak Down Testers & Shock Inflators
- 58 Digital Levels
- 59 Extra Tools

### 60 STEERING WHEELS

- 60 Aluminum Wheels
- 62 Steering Accessories

### 63 MISCELLANEOUS

- 63 Timers & Stopwatches
- 64 Padding
- 66 Helmet Hooks, Brackets, Radio Box, Drink Holder
- 67 Mirrors & Accessories
- 68 Brake Lines & Accessories
- 69 Carb Linkage Kits & Accessories
- 70 Remote Starter Button, Spark Plug Viewer, & Accessories
- 71 Spoiler & Fender Accessories
- 72 Insulation & Apparel
- 73 Car Covers & Silver Cases
- 74 Apparel

# FEATURED PRODUCTS



## 10" TABLET WITH SIDE-BY-SIDE NOTES

- 10" Tablet scale system with new app.
- Note-taking feature, side-by-side with weights and percentages.



## NOTE-TAKING SCREEN ON A 7" TABLET

See p.8-15



3" Backlit graphic display.  
Recall segment times in pits and compare laps.

## HOT LAP™ GPS GPS TRIGGERED IN-CAR TIMER



GPS sensor  
mounts in car.

- Track mapping.
- Divide the track into segments.
- See where you are fast and where you are losing time.
- Compare laps.

See p.63

# FEATURED PRODUCTS

## COMPUTERSCALES®

### dx3™

#### PRO WIRED HYBRID™ MODEL

#### 10" TABLET

- Huge high resolution 7.75" x 5.75" backlit color display.
- Easily customizable.
- Note-taking and 50 set named memory stores weights and percentages.
- Includes high contrast display for bright sunlight.

See p.11



## COMPUTERSCALES®

### dx2™

#### SEMI PRO WIRED HYBRID™ MODEL

#### 7" TABLET

- Large high resolution 6" x 3.75" backlit color display.
- Easily customizable.
- Note-taking and 10 set named memory stores weights and percentages.

See p.11



# FEATURED PRODUCTS

## COMPUTERSCALES® WIRELESS 10" TABLET XLi™ 3000 lbs DUAL LOAD CELL



- 10" Android™ tablet with high resolution screen, case, screen protector, and stylus included.
- Ready to use right out of the box.
- Secure wireless connection from the pads directly to the tablet.
- Free app updates.
- Customizable display: change the main screen display order to suit your preferences, show only what you want to see, rotate or change the car icon, change the partial weight percentage resolution or weight units.
- Alternate background skins.
- Side-by-side note taking / named memory: note taking on the same screen as weights and percentages.
- Name your memory locations - title, date, track, etc.
- Keep a record of the changes made and the results - notes are tied to the memory location.
- Add, edit, or delete notes as needed, virtually unlimited space available.
- Save to file: save all your stored weights and notes with the tap of a button, easily email or connect to PC for download.



See p.14

## TURN PLATE RAMPS



- Drive onto your turn plates and avoid camber bind.
- 4 Ramps and 2 spacers.

See p.24

## COMPACT RADIO BOX



- 2 Velcro straps hold the radio securely in place.
- Internal padding prevents damage.
- 3 Sided for easy access.
- Adjustable brackets mount to your roll-bar at multiple angles.
- Available for 1-3/4" or 1-1/2" bar.

See p.66

# FEATURED PRODUCTS

## MEMORY TIRE PYROMETER

- Large high resolution display shows all 12 temps at the same time. Shows memory temperatures on the main screen. Scroll up and down to compare to current temperatures. Stores up to 99 sets.
- Ultra fast response for quick temperatures or use exclusive "Anticipation Mode" that uses a precision algorithm to predict the ultimate temperature.
- Fast response tire probe with adjustable tip length, adjust the probe depth to your preference or type of tire - indicator light lets you know when the temperature has recorded and you can move to the next location.
- Computes averages for all your tire temperatures: LF, LR, RR, RF, Left side, Right side, Front and Rear.
- Alternate "Bright Sunlight Display" screen mode for easier viewing outdoors. Swipe to the right to view your temperatures on the high contrast bright sunlight display.
- Note taking right on the tablet, tied to the memory slot. Type notes with on-screen keyboard or by voice.
- Named memory locations: Give your memory locations names for easier recall - title, date, track, etc.
- Save your current or all your stored temperatures to a file. The file includes all temperatures and any notes you have entered. Downloads to a comma-delimited file for easy editing in a spreadsheet.
- Reads temperatures in degrees Fahrenheit or Celsius. Easily switchable from the setup screen.



See p.42

## ULTIMATE DIGITAL GAUGE

0-100 PSI • 3.5" FACE

- Accurate to 0.1%, reads to 0.1 psi.
- 3.5" Face.
- Saves all 4 tire pressures on the display.
- Back light for night use.
- Swivel angle chuck and 17" hose for ease of use.
- 3 High volume bleed-off buttons for fast setting on pit stops.
- Includes Silver case.
- Ball chuck included.
- Comes with a rubber bumper for gauge protection.



See p.36

## ENGINE LEAK DOWN TESTER

- Easy-to-use tester checks ring seal, valves, and head gaskets.
- Quickly tell from the outside when your engine needs an overhaul.



See p.57

# ACCURATE SETUPS

NOW MADE REALLY EASY



## WIRELESS CONVENIENCE.



- The cables are gone, nothing to trip over.
- Easily converts to metric.
- Display just the information you want, nothing you don't.
- Easy to upgrade.
- Download the latest app free and keep your system state-of-the-art.
- New app with Notes Screen shown together with weights and partials, side-by-side. See everything at the same time. (On 10" tablet only.)

### Everything you need is included:

Complete systems include a tablet (7" or 10") with protective enclosure, and Silver case, screen saver, stylus, universal charger and USB cable, and 4–15" or 12" pads with wireless modules built in.



10" Tablet



7" Tablet

## COMPUTERSCALES® XLi TABLET XLi™ SINGLE LOAD CELL

DESCRIPTION	PART #	PRICE
Computerscales® Wireless 7" Tablet	52-72715	\$1999.99
Computerscales® Wireless 10" Tablet	52-72717	\$2199.99
Computerscales® Wireless Without Tablet	52-72718	\$1799.99

## COMPUTERSCALES® XLi TABLET XLi™ DUAL LOAD CELL

DESCRIPTION	PART #	PRICE
Computerscales® Wireless 7" Tablet	52-72726	\$3099.99
Computerscales® Wireless 10" Tablet	52-72728	\$3199.99
Computerscales® Wireless Without Tablet	52-72729	\$2799.99

## COMPUTERSCALES® XLi TABLET XLi™ 12" PADS

DESCRIPTION	PART #	PRICE
Computerscales® Wireless 7" Tablet 1100lbs./Pad	52-72691	\$1899.99
Computerscales® Wireless 7" Tablet, 400lbs./Pad	52-72630	\$1999.99

\*Kart, Quarter Midget, Legends, Bandeleros, etc.



Shown with Billet Levelers and Turnplate Roll-offs available separately.

SCAN THIS QR CODE TO SEE OUR VIDEO TUTORIAL ON: CHANGING BATTERIES IN LONGACRE® WIRELESS SCALES





# TABLET SCALE FEATURES



## CURRENT WEIGHTS MEMORY WEIGHTS

Shown at the same time for easy comparison. Makes hitting your target setup simple and hassle free.

## Exclusive Tablet Scale Features

- An easy-to-use "Setup Page" lets you customize the partial percentage display if you wish. Change to metric readout here if needed.
- Battery condition for pads and tablet is shown on the display.
- Special high contrast screen for very bright sunlight conditions.
- 7" Tablet and smartphone automatically work in both horizontal ('landscape') and vertical ('portrait') orientation.
- Charger for tablet is included. Pads use replaceable AA Alkaline batteries.

For the car icon on the display you can select any of the below car options.



Stock Car



Modified



Indy/F1



Kart



Customize With Your Car

You can even have a picture of YOUR car as the icon to personalize your system. Call for details.

## CAR ICON AND ALL WEIGHTS CAN BE ROTATED ON THE DISPLAY.

Easy viewing from any position around the car. Just tap the button above the car. Wheel weights 'follow' rotation.

Best when standing behind the car.



Best when standing on the right side of the car.



Best when standing on the left side of the car.



Best when standing in front of the car.



## DURABILITY

The tablet has a protective enclosure that helps prevent damage, a Silver case, and a screen saver to protect the display.

## COMPARE OUR PADS TO OTHERS

Other 'billet' pads



.5" Thick flat plate



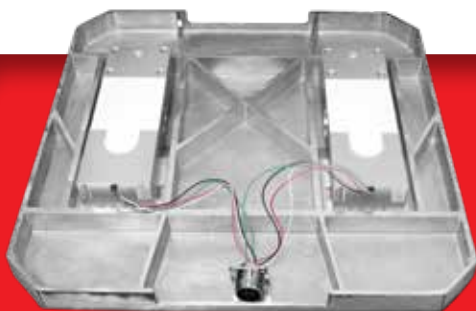
Longacre® pads



1.1" Tall reinforcing ribs



Our pads use elaborate computer-designed reinforcing ribs to add rigidity that's not available with simple flat plate style 'billet' pads. The more rigid your pads are, the lower the deflection and the more accurate your setup.



## FOR THE LOWEST DEFLECTION

Longacre® Dual Load Cell pads give you the lowest deflection. The design allows the dispersal of stress over a much larger area of the pad to minimize platform deflection. You get the least deflection and the most accurate and consistent setups possible. Best for scaling cars with high camber.

# SCALE SYSTEM APP

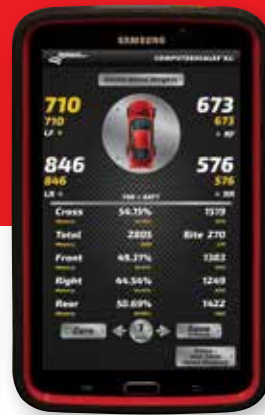
Note-taking right on the tablet, linked to the memory number. Keep a permanent record of the changes you've made and the results you got. Type notes with the on-screen keyboard or take them by voice. You can add, edit, or delete as needed. Virtually unlimited space is available. This app can be downloaded to your current tablet scales at no cost. Just go to our website or the Google Play™ Store. Google Play™ is a trademark of Google Inc.

## 2 BACKGROUND GRAPHICS 'SKINS'

- Customize your app background with different skins. Pick the one you prefer, they are easily switched.
- Weights and numbers are crisp and easy to read.
- There's a "High Contrast Display" for very bright sunlight. It makes the display very readable outdoors.



Standard Red Skin



Industrial Black Skin



Bright Sunlight Skin



NOTE-TAKING SCREEN

## 10" Tablet with Side-By-Side Notes



- Note-taking right on the tablet, tied to the Memory number.
- Show notes on the screen with the current wheel weights and percentages. See everything at the same time.
- Store race notes and chassis setup data (caster/camber, spring rates, tire pressures, etc.)

- Store your pre-race check list. Check the jobs off as they're done. Don't miss anything.
- Easily build a customized template for all the info you need, just fill in the blanks.
- Keep a permanent record of the changes made and the results.

- Type notes with on-screen keyboard or by voice.
- Add to, edit, or delete as needed. Recall anytime.
- Virtually unlimited space available. Scroll as needed.
- Download to a PC or e-mail.



### PRO dx3™ WIRED HYBRID™ MODEL

7.75" x 5.75" DISPLAY



10" TABLET

"High Contrast Display"  
for bright sunlight. Switch  
back and forth easily.

Download weights to  
a PC or e-mail.

- Use just like traditional wired scales or you can remove the controller tablet and use it wirelessly.
- Large high resolution 7.75" x 5.75" backlit color display. All of the features of our fully wireless tablet scales in a hybrid wired/wireless system.
- A separate circuit board powers the load cells, connected by our Hi-Flex Polysilicone cables. The controller tablet mounts on top and is easily disconnected to become a semi-wireless system if you wish. Leave the controller in the case or remove it and place it where it's convenient. The case can be tucked under the car to keep it out of your way.
- Easily converts to metric.



See this new scale in use.  
Go to our website for a link.

DESCRIPTION	PART #	PRICE
Computerscales® Hybrid DX3™	52-72617	\$1699.99
Computerscales® Hybrid DX3™ Dual Load Cell	52-72653	\$2449.99



### SEMI PRO dx2™ WIRED HYBRID™ MODEL

6" x 3.75" DISPLAY



7" TABLET

- Tablet shows all wheel weights and all partial percentages. Can be easily customized to your preference. Show just what you want, nothing you don't.
- 10 Set memory stores weights and percentages, shows on the display at the same time as current weights for quick comparison.
- A handy note-taking feature lets you keep notes right on the tablet screen. Memory slots can be used for scaling notes or named to organize complete setup specs: caster/camber, stagger, toe-in, tire pressures, shocks, etc. Notes may be entered by typing or voice command and recalled at any time for reference.
- Wheel weights and percentages can be rotated on the display to make viewing from anywhere around the car easier.
- Controller tablet has rechargeable battery (charger included). Pad board runs 100+ hours on replaceable alkaline batteries. Low battery indication for both.
- Easily converts to metric.



See this new scale in use.  
Go to our website for a link.

DESCRIPTION	PART #	PRICE
Computerscales® Hybrid DX2™	52-72613	\$1399.99
Computerscales® Hybrid DX2™ Without Tablet	52-72615	\$1299.99

# SCALES FOR KARTING



12"x12" PADS

## COMPUTERSCALES® XLi WIRELESS SCALES

**Everything you need is included:** Complete systems include a 7" tablet with protective case, screen saver and stylus, Silver case, universal charger and USB cable, and 4-12"x12" pads with wireless modules built in. Easily converts to metric.

DESCRIPTION	PART #	PRICE
Computerscales® with 7" Tablet XLi™ Karting 400 lbs	52-72630	\$1999.99
Computerscales® with 7" Tablet XLi™ 1100 lb 12" Pads	52-72691	\$1899.99

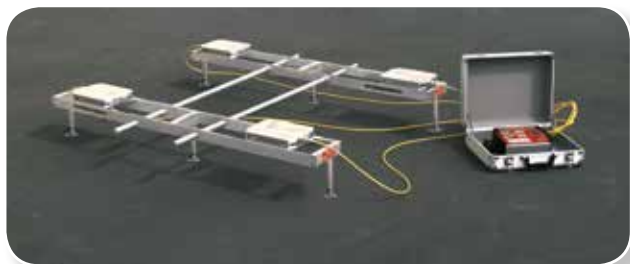


12"x12" PADS

## COMPUTERSCALES® WIRED SCALES AccuSet II™

- 4 Line display shows all 4 wheels and all partial percentages.
- CNC machined dead flat low deflection pads for the best accuracy, 400 lbs. capacity.
- Easy to use.
- 1/10 Percent accuracy.
- 2 Year limited warranty.
- Easily converts to metric.
- Silver carrying case and red polysilicone cables.

DESCRIPTION	PART #	PRICE
Computerscales® AccuSet II™ Karting	52-72624	\$1099.99



## BILLET ALUMINUM KART SETUP FIXTURE

- Optimum rigidity for accurate setups.
- Lightweight with detachable legs for compact storage.
- Can be used with other size kart pads (Call factory.)

DESCRIPTION	PART #	PRICE
Kart Setup Fixture - 12" CNC Kart Pads	52-72961	\$624.99
Kart Setup Fixture - 15" CNC Kart Pads	52-72962	\$624.99

# COMPUTERSCALES® *AccuSet II™*

## COMPUTERSCALES®

### AccuSet II™ 1500 lb/PAD

Store your baseline setup in memory. Then recall it instantly to compare to the current setup. Saves time writing it down – always handy. This 1 slot memory is really helpful and is super easy to use.

- Shows all 4 wheel weights plus cross weight.
- Push one button for all partial percentages and weights.
- Slanted for easier viewing.
- Includes deluxe Silver carrying case for electronics and cables.
- Low profile pads with satin finish, flat to within .01" for accurate setups.
- 15" x 15" x 2.5", 1500 lbs/pad capacity.
- Easily converts to metric.
- 2 Year limited warranty.



**NEW - Baseline Memory Recall**

DESCRIPTION	PART #	PRICE
Computerscales® AccuSet II™ 1500 lb/Pad	52-72593	\$1119.99

## COMPUTERSCALES®

### AccuSet II™ 1100 lb/PAD

- Display shows all 4 wheel weights plus all percentages.
- 12" x 12" x 1100 lbs. capacity powder coated pads.
- Great for IMCA cars, Legends, Dwarf, Mini Cup, Bandeleros, Road Racing Formula classes, Quads, etc.
- Easily converts to metric.



DESCRIPTION	PART #	PRICE
Computerscales® AccuSet II™ 1100 lb/Pad	52-72582	\$1099.99

### COMPARE OUR PADS TO OTHERS.

Other 'billet' pads



.5" Thick flat plate



Longacre® pads



1.1" Tall reinforcing ribs



Our pads use elaborate computer-designed reinforcing ribs to add rigidity that's not available with simple flat plate style 'billet' pads. The more rigid your pad is the more accurate your setup.

**ALL PARTIAL PERCENTAGES.** ▶

**PUSH ONE BUTTON TO GET EITHER DISPLAY INSTANTLY.**

**4 WHEEL WEIGHTS PLUS CROSS.** ▶





# HIGHER CAPACITY PULL DOWN RIG SYSTEMS



## COMPUTERSCALES® WIRELESS

### 10" TABLET XLi™ 3000 lbs DUAL LOAD CELL

- Wireless 10" tablet included.
- Shows 4 individual wheel weights plus all partial percentages.
- App available to use Android™ phone as controller.
- 3,000 lbs / Pad.
- 15" x 15" x 2.5" Pads.
- Easily converts to metric.



SCAN THIS QR CODE TO SEE  
OUR VIDEO TUTORIAL ON:  
**SYNCING YOUR WIRELESS  
SCALES WITH A TABLET**

DESCRIPTION	PART #	PRICE
Computerscales® Wireless 10" Tablet XLi™ Dual Load Cell, 3,000 lbs / Pad	52-72675	\$3999.99
Computerscales® Hybrid DX3™ Dual Load Cell, 3,000 lbs / Pad*	52-72673	\$3499.99

\*Cables still connected to pads.



## COMPUTERSCALES® WIRED

- 15" x 15" x 4" (5" on #52-72668) tall HD pads.
- AA Battery powered.
- Control box shows 4 individual wheel weights plus all partial percentages.
- Extra long 24' HD Hi-Flex cables with lock ring connectors.
- Easily converts to metric.



DESCRIPTION	PART #	PRICE
Computerscales® Wired System, w/ 4"T x 3500 lb. Powder Coated Pads	52-72663	\$3799.99
Computerscales® Wired System, w/ 4"T x 3500 lb. CNC Machined Pads	52-72667	\$4199.99
Computerscales® Wired System, w/ 5"T x 5000 lb. Pads	52-72668	\$5199.99

## STORAGE BOXES FOR 15" & 12" LOW PROFILE PADS

- Padded lining keeps pads protected.
- Heavy duty aluminum frame with scuff-resistant sides.
- Could also be used for radios or other equipment.

DESCRIPTION	PART #	PRICE
15" Scale Pads Storage Box	52-72292	\$209.99
12" Scale Pads Storage Box	52-72280	\$189.99



## SCALE CART

- Convenient storage at the track or in the shop.
- Cart holds the control box at just the right height.
- Rolls around the shop and pits with ease.
- Pads slide in on a steep angle, are easier to get in and out, and won't come out in transit.
- Durable powder coated finish.

DESCRIPTION	PART #	PRICE
Scale Cart	52-72304	\$449.99



## GAS CAN SCALE

- Reads to 1/10 lb., 350 lbs. capacity.
- Weigh gas can during a pit stop to determine fuel used.
- 12" x 12" Platform.

DESCRIPTION	PART #	PRICE
Gas Can Scale	52-72330	\$749.99



## BILLET ALUMINUM ELECTRONIC COIL SPRING TESTER

- 0-3000 lbs. by 1 lb.
- 8.5" Space between posts.
- Digital travel to .001".
- 6" to 20" tall springs.
- 5" and 5.5" coil springs, square and 6" diameter 'pigtail' ends and coil-overs.
- Includes easy-to-use digital indicator to measure spring travel and a digital load readout.



DESCRIPTION	PART #	PRICE
Billet Aluminum Electronic Coil Spring Tester	52-73505	\$1199.99





## VALVE SPRING TESTER

1400 lbs.

- Spring pressure from 0 to 1400 lbs. by 1 lb. increments.
- Spring travel from 0.000" to 4.000" in .001" increments.
- 1/10 of 1% accuracy – on both spring pressure and travel.
- Positive stop to make repeated spring checks at the same height.
- Check springs with or without retainer.
- Spring travel and pressure can be zeroed at any point.
- Quick and easy to use.
- Runs on battery or 110 volt (220V available.)

DESCRIPTION	PART #	PRICE
Valve Spring Tester to 1400 lbs. by 1 lb.	52-73511	\$1099.99



NEW HD rigid design like a machine tool for more accurate readings makes this the best valve spring tester available!



DIGITAL SPRING TRAVEL

## SPRING RUBBER LARGE SPACING COIL-OVER

Many front running teams are using the new style coil-over springs that have fewer coils and wider spacing, giving more spring travel before coil bind. With these spring rubbers, you can now fill that larger gap between coils to fine-tune your set-up.

DESCRIPTION	PART #	PRICE
Orange Soft 1-1/4"	52-61016	\$44.99
Red Medium 1-1/4"	52-61041	\$44.99
Blue Hard 1-1/4"	52-61051	\$44.99



## SPRING RUBBER STANDARD COIL-OVER & BIG SPRING

- 0.75" Thick (coil-over.)
- 1.25" Thick (5" or 5.5".)

DESCRIPTION	RUBBER	PART #	PRICE
Yellow 5 – Soft*	Coil-Over Spring Rubber	52-61005	\$39.99
Clear 10*	Coil-Over Spring Rubber	52-61010	\$39.99
Orange 15*	Coil-Over Spring Rubber	52-61015	\$39.99
Red 40*	Coil-Over Spring Rubber	52-61040	\$39.99
Blue 50*	Coil-Over Spring Rubber	52-61050	\$39.99
Black 70 – Hard*	Coil-Over Spring Rubber	52-61070	\$39.99
Red 5/5.5" – Soft	Deep Groove Spring Rubber	52-61140	\$59.99
Blue 5/5.5" – Medium	Deep Groove Spring Rubber	52-61150	\$59.99
Black 5/5.5" – Hard	Deep Groove Spring Rubber	52-61170	\$59.99

\*For relative compression only.





**Comes with Silver case.**

## LASER CHASSIS HEIGHT CHECKER & LASER LEVEL

- Check actual chassis height when the car is on scales or on a leveler. Don't get your setup 'just right' only to find out the car is too low or too high once you get it back on the ground.
- Includes an easy to set-up self-leveling beam laser, 4 easy to read targets that are held to the frame with magnets, and a separate pad leveling target for leveling the scale pads and establishing the 'ground plane' to measure chassis heights.

DESCRIPTION	PART #	PRICE
2" to 6" Range	52-72983	\$224.99
2" to 8" Dirt Cars	52-72985	\$224.99
1" to 4.5" Range	52-72981	\$224.99

## CHASSIS HEIGHT CHECKER

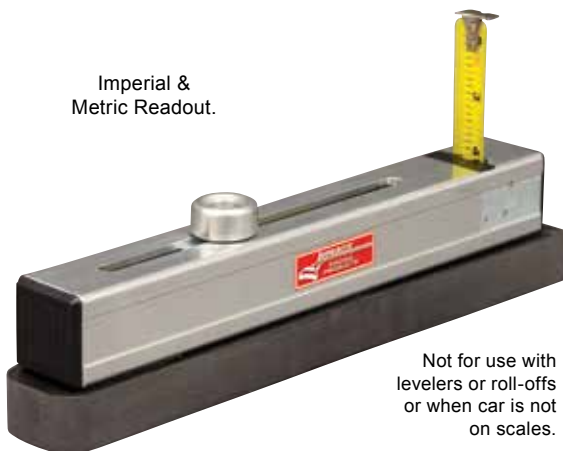
Imperial & Metric Readout.



- With the car on the ground, it measures chassis height directly, accurate to .0625".
- With the car on scale pads, it measures from top of pads to frame directly (no subtracting needed.)
- Measures chassis height dynamically, as you work on car. Magnet holds tape to frame. Indicator shows height as car moves up and down. Use set of 4 to quickly see height at all 4 corners.
- 2 Lengths – 24" for perimeter frames, 36" for straight rail cars on right side.
- Measures height from 2"-10" on 24" and 2"-15" on 36".

DESCRIPTION	PART #	PRICE
Chassis Height Checker - Short 24" Model (1)	52-78320	\$99.99
Chassis Height Checker - Short 24" Model (set of 4)	52-78322	\$349.99
Chassis Height Checker - Long 36" Model (1)	52-78325	\$109.99
Chassis Height Checker - Set of 4 - (2) 24" & (2) 36"	52-78326	\$369.99

Imperial & Metric Readout.



Not for use with levelers or roll-offs or when car is not on scales.

## MINI CHASSIS HEIGHT CHECKER

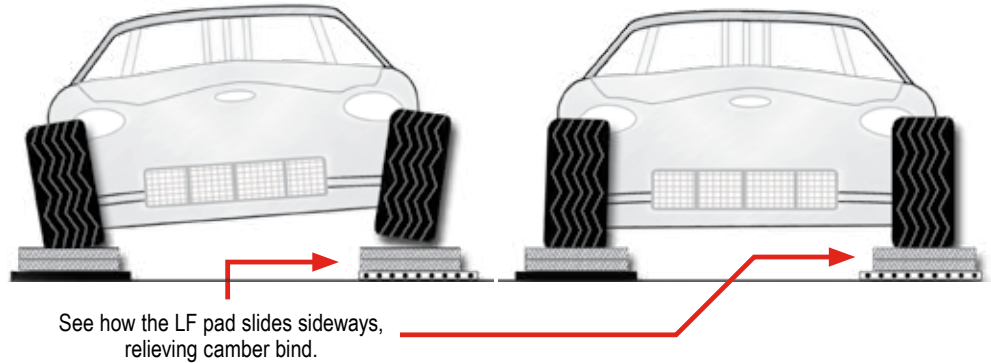
Great for quick, accurate checks of chassis height. Push it under the car, raise the tape with the knob, pull it out, and read the height. Range is 2"-8", accurate to .0625". This is a shortened and simplified version of the Chassis Height Checker above. Quick, accurate, and easy-to-use. It's a great replacement for 'step' type tools, more accurate, more versatile, and easier to use.

DESCRIPTION	PART #	PRICE
Mini Chassis Height Checker	52-78318	\$44.99
Mini Chassis Height Checker for Scale Pads	52-78319	\$59.99

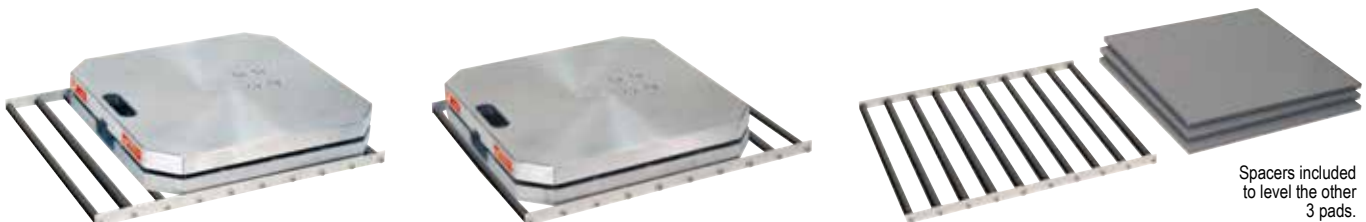
# SIDESLIDER™ FOR BIND-FREE SETUPS

## CHASSIS ROLLER SLIP PLATE

You use ball bearing A frame pivots, low friction ball joints, greaseable Heim joints, and even ceramic bearings all to eliminate suspension friction. Don't set up your car with even a small bind at the scale pads.



## ECONOMY SIDESLIDER™



When you lift your car to put it on scales the front wheels camber in at the bottom. As you let it down the wheels must be allowed to freely camber back out or there will be a small residual bind in the chassis. This will make your wheel weights (and your setups) less than perfect. To avoid this, the front wheels must be able to easily move sideways. With SideSlider™ your front wheels can move sideways effortlessly to relieve any camber-induced bind. This will assure you the most accurate, consistent setups possible.

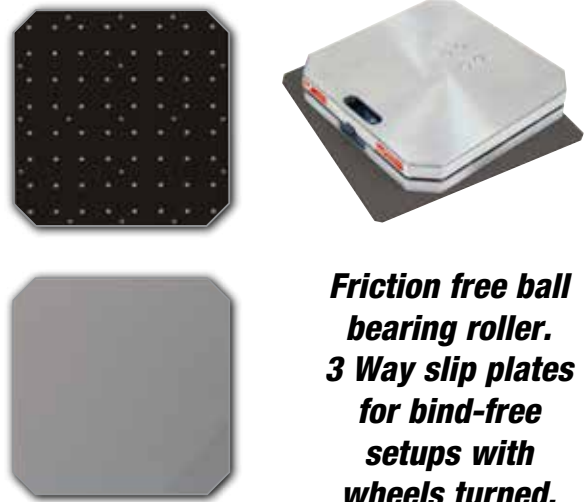
- Rollers are made from a tough, low friction polymer.
- Install under Left Front wheel (it has the most camber change.)
- 3 Spacers are included to re-level your setup.
- Use on any smooth floor surface.

DESCRIPTION	PART #	PRICE
Economy SideSlider™ Single with 3 Spacers	52-72870	\$119.99
Economy SideSlider™ Set with 2 Spacers	52-72872	\$169.99

## "3D" BALL ROLLER SIDESLIDERS™

- Install under both front wheels.
- Must be used under scale pads.
- Supported on ball bearings made from a low friction polymer.
- 2 Spacers are included to re-level your setup.
- Use on any smooth floor surface.

These SideSliders™ move in 3 directions: sideways, front and back, and they rotate. They are great for checking wheel weights with wheels turned. See what happens to your wheel weights with different caster settings.



DESCRIPTION	PART #	PRICE
"3D" Ball Roller SideSliders™ 2 Plates and 2 Spacers	52-72875	\$399.99

# BILLET ALUMINUM MODULAR SETUP PLATEN

## BEST RIGIDITY FOR ACCURATE SETUPS



### EASY TO ASSEMBLE. EASY TO TRANSPORT.

The entire Platen is leveled, not just the scale pads as with hi-density foam racks. Modular components assemble quickly, then break down for efficient transportation.

**ASSEMBLES IN 15  
MINUTES OR LESS AND  
DISASSEMBLES EVEN QUICKER.**



**OPTIONAL VERSION:**  
**SideSliders™** allow the pads to float effortlessly sideways to relieve any chassis bind caused by camber change. Great for IRS cars.

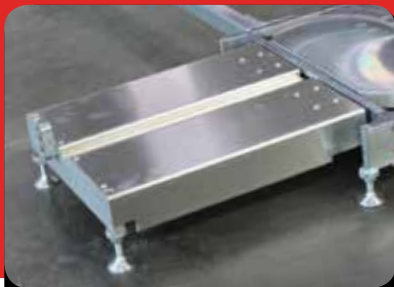
52-72865

- Four Billet Scale Pad Levelers with pop-out feet (24 total.)
- Two adjustable spanners.
- Two ramps.
- Two horizontal locator bars.
- Billet T6 aluminum scale pad levelers with a full floor for the best rigidity and the most accurate setups.
- Swivel adjusting feet pop out for quick and easy storage.
- Spanners are attached to levelers and are flush with the top of scale pad.
- For 15" x 15" x 2.5" scale pads, wired or wireless.
- Fully adjustable for wheelbase (90" – 110") and track width.

DESCRIPTION	PART #	PRICE
Adjustable Scale Platen Setup Fixture with Billet Pad Levelers	52-72860	\$2699.99
Adjustable Scale Platen Setup Fixture with 2 SideSliders™	52-72865	\$2999.99



OPTIONAL TURNPLATE ROLL-OFF



OPTIONAL FRONT ROLL-OFF

This new setup platen uses the best design, engineering, and fabrication. The billet aluminum scale pad levelers are rigid for accurate setups and the formed spanners and ramps are strong, yet lightweight. Just set up the billet levelers and clip on the spanners and ramps.

Set caster and camber right on the platen. These attach quickly and easily to the front levelers and come with pop-out adjusting feet.

**ADD TO YOUR  
PLATEN'S FUNCTIONALITY  
WITH THESE SPECIAL  
PURPOSE ROLL-OFFS.**

DESCRIPTION	PART #	PRICE
Modular Roll-off Platforms for Turnplates - Set of 2	52-72856	\$549.99
Aluminum Turn Plates (Pair)	52-79800	\$749.99
Modular 18" Roll-offs only - Set of 2	52-72851	\$329.99
Modular 30" Roll-offs only - Set of 2	52-72853	\$349.99

# BILLET LEVELERS

## MODULAR SCALE PAD LEVELING FIXTURES

### BILLET SCALE PAD LEVELERS FOR 2.5" PADS

- CNC machined T6 aluminum.
- Leveling feet “pop in and out” for easy setup and storage. They’re held in place with “Rare Earth” magnets.
- Full floor for best pad support and rigidity.



DESCRIPTION	PART #	PRICE
Levelers for 2.5" Pads (Set of 4)	52-72840	\$1449.99

### MODULAR DESIGN GIVES YOU ADDED FLEXIBILITY.



+



=



BILLET LEVELER

OPTIONAL ROLL-OFF ATTACHES EASILY

MODULAR ROLL-OFF ASSEMBLY

### MODULAR 18" ROLL-OFFS SET OF 4

- With pop-out feet.
- Shown with Billet Levelers (not included.)
- Attach easily.



DESCRIPTION	PART #	PRICE
Modular 18" Roll-Offs (Set of 4)	52-72850	\$599.99

### BILLET SCALE PAD LEVELERS WITH 2 BUILT-IN SIDESLIDERS™

- To relieve camber-induced chassis bind for the most accurate setups.
- Same specs as above, including pop-out feet.



DESCRIPTION	PART #	PRICE
Billet Scale Pad Levelers 2 Built-in SideSliders™ for 2-1/2" Pads (Set of 4)	52-72844	\$1648.99
(For cars with independent rear suspension.)		

# LEVELING ACCESSORIES

## FOR NEW STYLE SCALE PAD



### 1 PIECE BILLET ROLL-OFF LEVELER FOR 2.5" PADS - SET OF 4

- Full floor for best pad support.
- CNC machined for accurate setups.
- Includes 2 sets of wheel stops.
- Use with wired or wireless scales.
- Includes 24 pop-out feet, 6 per leveler, for best support.



Pop-out feet stored in sturdy case. 4 Adjuster tools included.

DESCRIPTION	PART #	PRICE
Set of 4 with 18" Roll-Off Area	52-72831	\$1948.99
Set of 4 with 2 SideSliders™	52-72845	\$2399.99



**FULL FLOOR FOR BEST PAD SUPPORT.**



**SHOWN WITH TURNPLATE ROLL-OFF.**

## MODULAR ROLL-OFF PLATFORMS FOR TURNPLATES

Most other roll-off fixtures only have 12" to 14" of roll-off area. Sometimes that's not quite enough. If you start with low tire pressures, the "contact patch" can be long. Set your caster and camber right on the fixture. Roll-offs for turnplates attach to front of levelers. Includes 2 pop-out leveling feet for convenient storage. (Billet pad levelers not included.)

DESCRIPTION	PART #	PRICE
Modular Roll-Off Platforms For Turnplates (Set of 2)	52-72856	\$549.99



Turnplate roll-off platform (front) shown with billet leveler and turnplates. (Turnplates not included.)

## BILLET SCALE PAD LEVELERS AND 18" ROLL-OFFS - SET OF 4

DESCRIPTION	PART #	PRICE
Billet Scale Pad Levelers & 18" Roll-Offs (Set of 4)	52-72830	\$1828.99
Modular 18" Roll-Offs Only (Set of 2)	52-72851	\$329.99



Shown with Modular Billet leveler. Works with 1 piece Billet leveler or Modular leveler. Roll-offs for turnplates – attach to front of levelers – includes 2 pop-out leveling feet for convenient storage.



## FORMED ROLL-OFF LEVELERS FOR 2.5" SCALE PADS

- Roll car off scale pads then back on again to eliminate camber bind.
- Rigid formed and welded aluminum construction.
- Wheel stops on 2 roll-offs for safety.
- 6 HD swivel feet for easy leveling on most any surface (not pop-out style.)
- New design lightweight and more rigid.

DESCRIPTION	PART #	PRICE
Roll-Off Levelers for 2.5" Scale Pads	52-72905	\$1099.99



**NOTE:** These devices are not for use with our dual cell low deflection scale pads. See billet levelers and roll-offs.

## INDIVIDUAL SCALE PAD LEVELERS

- For a quick, accurate setup anywhere.
- 4 HD swivel feet (not pop-out style.)
- Formed and welded.

DESCRIPTION	PART #	PRICE
Pad Levelers (Set of 4)	52-72900	\$599.99



## BUDGET ROLL-OFFS FOR 2.5" PADS ON GROUND

DESCRIPTION	PART #	PRICE
Budget Roll Offs	52-72904	\$199.99

Not for Turn Plates.



NASCAR® Xfinity® Series.  
Photo courtesy of JR Motorsports  
and Harold Hinson Photography.

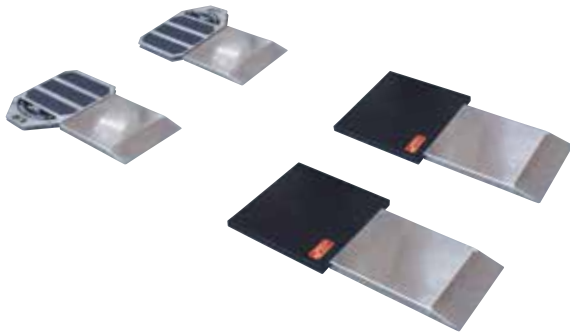


## ALUMINUM TURN PLATES

- Low profile – only 1" tall.
- Reads to 0.5° – Indicator can be zeroed with the car on.
- Free floating in 2 directions eliminates bind.
- Can be used on top of scale pads.

DESCRIPTION	PART #	PRICE
Aluminum Turn Plates (Pair)	52-79800	\$749.99
Single Aluminum Turnplate with Spacer	52-79805	\$429.99
Turn Plate Spacers with Slip Plates (Pair)*	52-79751	\$119.99

\*To level rear of car when using turnplates on ground.



## TURN PLATE RAMPS

Roll on to avoid camber bind.

DESCRIPTION	PART #	PRICE
Turn Plate Ramps - Set of 4	52-79753	\$249.99

Turn Plates not included.



## ALUMINUM RAMPS 36" LONG (SET OF 4)

- To get your car on the scales easier.
- Car rolls up on scales much easier than shorter ramps and is quicker than using a jack.
- Formed aluminum, strong, lightweight, and durable.
- Set of 4 for 2.5" scale pads.

DESCRIPTION	PART #	PRICE
Aluminum Ramps - 36" Long (Set of 4)	52-72537	\$399.99



4"  
Screw-in  
feet.

4"  
Pop-out  
feet.

8"  
Pop-out  
feet.

## REPLACEMENT FEET SCREW-IN & POP-OUT

- Screw-in or pop-out swivel feet sold in pairs (not interchangeable).
- Screw-in feet for formed levelers and pop-out feet for billet levelers.
- Screw-in feet are 1/2"-13 thread.
- 8" Legs are made from premium SAE 4140, rolled threads and double heat treated for strength.

DESCRIPTION	PART #	PRICE
Screw-In Swivel Feet 4" (Pack of 2)	52-72894	\$39.99
Screw-In Swivel Feet 8" (Pack of 2)	52-72890	\$79.99
Pop-Out Feet 4" (Pack of 2)	52-72896	\$39.99
Pop-Out Feet 8" (Pack of 2)	52-72893	\$89.99



# DIGITAL CASTER/CAMBER GAUGES

- AccuLevel™ Pro Model.
- Super Magnetic adapter.
- Padded carrying case.

**THIS IS A MUST HAVE TOOL.**

Here's a super accurate digital caster/camber gauge that reads to 0.1° (1/10°) and at a price any serious team can easily justify. It comes with our latest magnetic adapter and a padded Silver carrying case. There is a backlight for dark areas and a "Hold" feature for hard-to-reach places.

DESCRIPTION	PART #	PRICE
Caster / Camber w/ AccuLevel™	52-78290	\$249.99
Caster / Camber w/ AccuLevel™ Less Adapter	52-78291	\$219.99
Kart Caster / Camber Gauge w/ AccuLevel™	52-78292	\$209.99



**NEW:** Billet Magnetic adapter now with 8 premium "Rare Earth" magnets for a stronger pull. Installed from the back for protection. Flush face and easy to clean.

## AccuLevel™

Easily removes from gauge and can be used for other measurements such as spoiler and A frame angles, suspension, driveline, etc.

Great for bump stop cars with high LF camber. Reads as high as you need.





Comes with Silver case.



## DIGITAL CASTER/CAMBER GAUGE ACCULEVEL™ & QUICKSET™ ADAPTER

This is the fastest way to check your front end alignment, just hold it against the rim for easy, accurate readings. No spindle adapters required here. Made from CNC machined billet aluminum. Works on most race cars, up to a 17" wheel. Three point design squares up to your wheel, folds up for easy storage. Uses most caster/camber gauges. Billet aluminum fully CNC machined. Rigid for accurate readings Three-leg design squares gauge to your wheel.

- Billet aluminum fully CNC machined. Rigid for accurate readings. 3-Leg design squares gauge to your wheel.
- Comes with Silver case.
- Reads to 0.1°.
- Will work on most cars.
- AccuLevel™ digital readout can be easily removed and used for other angle measurements on the car.
- Can compensate for unlevel ground and more accurate readings.
- Just hold it against the rim to take a measurement, no adapter needed.
- Digital C/C gauge with AccuLevel™ and QuickSet™ adapter with case and reads to 0.1° camber.
- For wheels 12" to 17".



SCAN THIS QR CODE TO SEE OUR VIDEO TUTORIAL ON:  
**HOW TO CHANGE YOUR CASTER/CAMBER GAUGE ADAPTER**

DESCRIPTION	PART #	PRICE
Digital C/C Gauge with AccuLevel™ & QuickSet™ Adapter	52-78295	\$319.99
QuickSet™ Adapter Only	52-78428	\$129.99



Comes with Silver case.



## QUICKSET™ ADAPTER FOR LARGE WHEELS

- Folds up for easy storage.
- For 13" to 24" aluminum wheels.
- 'Feet' adapt to wheel bead.
- Folds for storage.

DESCRIPTION	PART #	PRICE
Digital C/C Gauge with AccuLevel™ & QuickSet™ Adapter	52-78298	\$329.99
QuickSet™ C/C Adapter Only	52-78430	\$139.99



## VIAL STYLE CASTER/CAMBER GAUGE WITH QUICKSET™ ADAPTER

- No adapter needed - just hold it against the wheel.
- Reads camber +/- 9°, caster + 12° to -4°.
- For wheels 13" to 17".

DESCRIPTION	PART #	PRICE
Billet Caster / Camber Gauge with QuickSet™ Adapter	52-78274	\$259.99

# BILLET CASTER/CAMBER GAUGES

CNC machined from a solid billet of T6 aluminum polished, Bright Dip anodized and laser engraved.

**THIS IS A PROFESSIONAL GRADE TOOL.**

## BILLET CASTER/CAMBER GAUGE

- Expanded range - measures camber to + or - 9° and caster + 12° to - 4°.
- Glow-in-the-dark vials, much easier to read.
- CNC machined billet aluminum-polished, Bright Dip anodized, laser etched.
- NEW Super Magnetic adapter, stronger pull. Uses 8 premium "Rare Earth" magnets to hold to your hub better, CNC machined for a dead flat surface and the highest accuracy possible.
- Can measure caster with or without turnplates. Best accuracy if used with turnplates.
- All vials checked for accuracy to 1/4°, assembled on a precision fixture.

DESCRIPTION	PART #	PRICE
Billet Caster / Camber Gauge with Magnetic Adapter	52-78272	\$169.99
Billet Caster / Camber Gauge Only - Less Adapter	52-78273	\$124.99



Comes with Silver case.



Billet Magnetic adapter now with 8 premium "Rare Earth" magnets for an even stronger pull. Installed from the back and recessed for protection. Flush face and easy to clean.





## CASTER/CAMBER GAUGES

- Reads camber from +6° to -6° accurate to 1/4°.
- Caster reads to +12° to -4°.
- All vials are individually checked for accuracy and assembled on a precision fixture.
- All critical surfaces are CNC machined for accuracy.
- New stronger magnetic adapter, dead flat surface for accuracy, won't chip or flake. (On 52-78260)

DESCRIPTION	PART #	PRICE
Gauge with Magnetic Adapter	52-78260	\$149.99
Gauge with GM Factory Adapter 3/4" – 20	52-78262	\$139.99
Gauge with Wide 5 Adapter 1-13/16" – 16	52-78264	\$139.99
Gauge with Kart Adapter 5/8" – 18	52-78265	\$139.99
Gauge and Case Only – NO ADAPTER	52-78250	\$119.99



Magnetic adapter with 8 premium "Rare Earth" magnets that hold to your hub better. Magnets installed from the back.



All gauges come with a premium Silver case.

Most adapters screw onto spindle, except magnetic and QuickSet™.

## SEPARATE ADAPTERS

Fits all Longacre® Caster/Camber Gauges.

DESCRIPTION	PART #	PRICE
Wide 5 Spindle Adapter 1-13/16" – 16	52-78405	\$49.99
Factory GM Adapter 3/4" – 20	52-78410	\$44.99
Allison Legacy / Big Ford Adapter 13/16" – 20	52-78412	\$49.99
Ford Pinto Adapter 3/4" – 16	52-78414	\$49.99
Billet Magnetic Adapter – For 52-78272	52-78424	\$79.99
Large Wheel QuickSet™ Billet Caster / Camber Adapter	52-78430	\$139.99
Fine Go-Kart Adapter 5/8" – 18	52-78438	\$49.99
Kart Adapter – (Metric) – 14 mm x 1.5	52-78439	\$49.99
Legend Car – (Metric) – 19 mm x 1.5	52-78445	\$49.99
QuickSet™ Billet Caster / Camber Adapter*	52-78428	\$129.99

\*For more info on QuickSet™ Adapters see p.26



## KART CAMBER GAUGE WITH SILVER CASE



- Specially built for karts.
- Reads ± 6° camber.
- 5/8"-18 screw-on kart adapter.
- Metric adapters available.

DESCRIPTION	PART #	PRICE
Kart Camber Gauge	52-78100	\$129.99



## ALUMINUM A-ARM SPACERS

- Won't fall out when setting front end.
- Lightweight aluminum.
- 6" Bolt centers.

DESCRIPTION	PART #	PRICE
Kit (all 4) 1 Each of 1/16", 1/8", and 2 Each of 1/4"	52-78512	\$49.99

## TOE-IN PLATES DELUXE HD

- Thicker material and deeper bend gives you more rigid plates for better accuracy.
- Higher kick-out on bottom holds plate against the wheel better. Great for cars with high camber LF wheels (bump stop cars).
- Magnets on one plate hold the tapes in place.



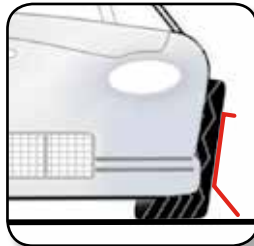
DESCRIPTION	PART #	PRICE
Deluxe HD Toe-In Plates (Pair)	52-79505	\$129.99



Magnets hold tapes in place during use.



Easier to read.



Great for high camber LF wheel.



Magnets hold tapes in place during use.



Magnets hold tapes in place as you work.

## TOE-IN PLATES STANDARD

- Quickest and simplest way to measure toe-in.
- Rest one of these plates against the tire on each side and measure toe directly using the 2 tapes included.
- Formed design is rigid for accuracy and stays put against the tire.

DESCRIPTION	PART #	PRICE
Standard Toe-In Plates (Pair)	52-79501	\$64.99



## QuickToe™ SETTING TOOL

Here's a different way to set your critical toe-in. A pair of three pointed fixtures mount to the wheels (with magnets) for super accuracy. You can even attach a caster/camber gauge to either side. Use tapes included to measure toe directly.

- Includes set of 2 fold-up fixtures, 2 tapes, Silver carrying case.
- Magnets in the legs hold your steel wheel – one on each side.
- Eliminates tire 'bulge' error.

DESCRIPTION	PART #	PRICE
QuickToe™ Setting Tool	52-79630	\$329.99



Mounts on the wheel for best accuracy.



Makes setting toe a quick 1 person job.



Attaches to steel wheels.



Small wheels on the bar let it slide under the car more easily.

## TOE-IN BAR

Similar to our 52-79620 Toe-In Gauge, but this new model measures to the outside of the tire. No scribe line needed. Reads toe to 1/16". Can be done by one person. Billet aluminum. Adjustable up to 88" in width. Great for wide track cars, Corvettes, etc.

DESCRIPTION	PART #	PRICE
Toe-In Bar	52-79622	\$174.99



## TOE-IN GAUGE

To get a very accurate toe-in measurement, jack up front wheels and scribe a true running line on the face of the tire. (See Billet Tire Scribe.) Place the gauge in front of the tires and align the pointers with the scribe lines. Then, move the gauge to the rear of the tires and align the fixed end with the scribe line. On the other end, loosen the thumb screws and move the slider until the pointer aligns with the other line. Now read the exact toe-in on the scale.

- An accurate way to measure toe-in to within 1/16".
- Easily done by one person.
- See 52-79610 Billet Tire Scribe.

DESCRIPTION	PART #	PRICE
Toe-In Gauge	52-79620	\$124.99



## BILLET TIRE SCRIBE

- Use to make a true running line on the face of the tire for measuring toe-in.
- Use with 52-79620 Toe-In Gauge.
- Spring loaded for easy one person use.
- Folds up for easy storage.

DESCRIPTION	PART #	PRICE
Billet Tire Scribe	52-79610	\$79.99



## TIRE ROLL OUT FIXTURE

- Wheel spins freely.
- Find leaks, punctures, or tire damage fast.
- Includes 10' stagger tape.

DESCRIPTION	PART #	PRICE
Tire Roll Out Fixture	52-50853	\$59.99



## POWER TAPES

- 1/4" x 10' for stagger inches only.
- 3/4" x 16' for toe-in, wheelbase, etc. Inches only.

DESCRIPTION	PART #	PRICE
Power Tape 1/4" x 10'	52-50870	\$5.99
Power Tape 3/4" x 16'	52-50875	\$6.99



## CHASSIS SETUP CHARTS

- Punched for 3 ring binder.
- Packaged 1 pad, 50 sheets.

DESCRIPTION	PART #	PRICE
Chassis Setup / Tire Chart	52-22528	\$14.99

## PRECISION BUMP STEER GAUGE WITH BILLET PLATE

This simplified design uses a single indicator to tell you the exact amount of bump steer within .001". No need to subtract one dial reading from another, less chance for error.

- Precision plate. 3/8" Thick T6 aluminum billet for the ultimate in accuracy. Anodized and laser engraved.
- Compact frame. More rigid billet and tube design for the best accuracy. Bright Dip anodized.
- Most accurate, easiest, and quickest way to measure your critical bump steer.
- Extended height design. Check bump steer at ride height or on stands.
- 3/8" Thick wheel plate has mounting holes for most 5 bolt patterns (4-1/2" to 5") and most wide 5 with 4, 5, and 8 bolt flanges.
- Center hole is 3-1/4".

DESCRIPTION	PART #	PRICE
Gauge with 5 Bolt, Wide 5 Plate	52-79005	\$289.99
Gauge with Blank Billet Plate	52-79011	\$274.99
Gauge with 4 & 5 Bolt Sport/Compact Plate	52-79003	\$274.99



New dial indicator easier to read, Shows + or - from 0.

## DIGITAL BUMP STEER GAUGE WITH BILLET PLATE

- Similar to 52-79005 above, but with precision digital readout.
- Easy to use – Push Zero, move suspension, read bump directly to .001".
- Includes billet plate – see above.

DESCRIPTION	PART #	PRICE
Digital Bump Steer Gauge with Billet Plate	52-79015	\$329.99



## SNAP CAP HUB MOUNTING STAND-OFFS

- For hubs with no mounting holes. These stand-offs screw on wheel studs (5/8" C.)
- Set of 2 stand-offs and bolts.

DESCRIPTION	PART #	PRICE
Hub Mounting Stand-Offs	52-79121	\$44.99



## BILLET PLATE 3/8" THICK

DESCRIPTION	PART #	PRICE
5 Bolt, Wide 5	52-79020	\$79.99
Blank Plate	52-79022	\$79.99
4 & 5 Bolt Sport Compact	52-79023	\$79.99



## STORAGE CASE BUMP STEER GAUGE

DESCRIPTION	PART #	PRICE
Storage Case	52-79019	\$79.99



# STAGGER GAUGES

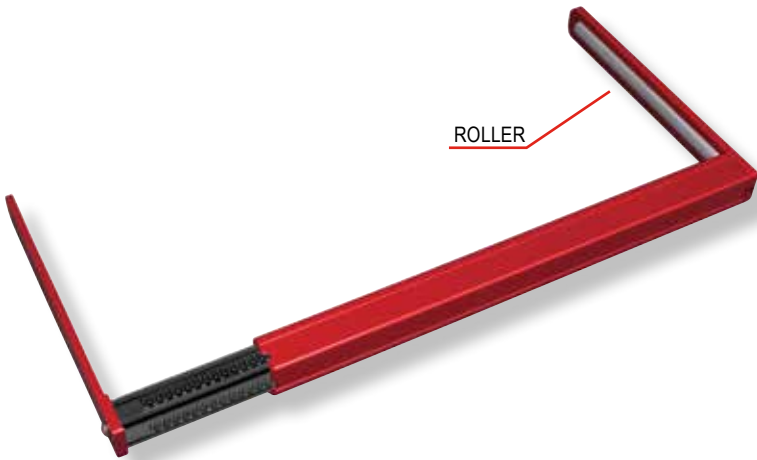
CHECK YOUR STAGGER QUICKLY AND ACCURATELY



## BILLET ALUMINUM STAGGER GAUGE

- 3/8" Thick T6 billet aluminum arms for extra rigidity and accuracy.
- Tight tolerance square tubes for accuracy. Custom extruded 6061-T6 aluminum.
- 62" to 110" circumference, in 1/8" increments.
- Scale on two sides. Easy to read with tires on the car or flat on the ground.
- Bolted together - no welding distortion.
- Anodized red.

DESCRIPTION	PART #	PRICE
Billet Aluminum Stagger Gauge	52-50840	\$79.99



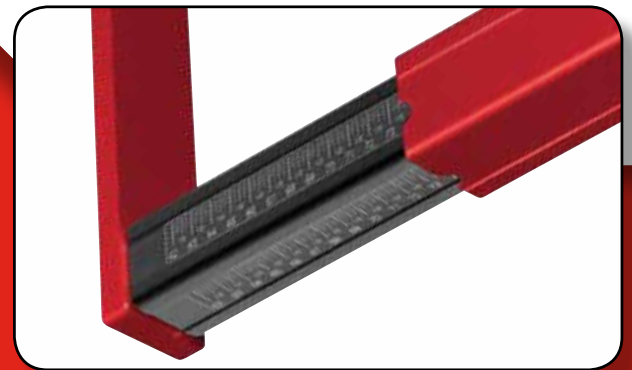
## DELUXE BILLET STAGGER GAUGE WITH ROLLER

- Roller on one end makes measurements easier.
- 3/8" Thick T6 billet aluminum arms for extra rigidity and more accurate readings.
- Measures from 62" to 110" in 1/8" increments.
- Tight tolerance square tube design for accurate results.
- Extra long billet arms, longer 9-3/4" for wider tires.
- Scale on two sides - easy to read with tires on the car or flat on the ground.
- Bolted together, no welding, anodized red.

DESCRIPTION	PART #	PRICE
Deluxe Billet Stagger Gauge with Roller	52-50846	\$119.99



Both models use custom tight tolerance aluminum tubes for more accurate readings.



Both have dual scales on two sides. Easy to read with tires on the car or flat on the ground.





# TIRE PRESSURE GAUGES

- Glow-in-the-dark dials.
- New 40 psi models.
- Gauges are damped for greater accuracy and durability.
- Digital, analog, and liquid filled.
- Durable mechanisms stand up to tough racing use and maintain accuracy.
- Most gauges come with both angle and ball chucks.

**THE PERFECT GAUGE FOR EVERY PREFERENCE.**

## MAGNUM™ 3.5" FACE

p.37

- Dual bleed buttons. Holds pressure.
- 40 psi plus 0-15, 30, 45, & 60 psi.
- Includes Silver case.



## ULTIMATE DIGITAL WITH PYROMETER

p.34

- Record pressures and temperatures, save 4 pressures & 12 temperatures on display, and is accurate to 0.1%.
- Tire probe & Silver case.



## LIQUID FILLED 2.5" FACE

p.38

- Special valve compensates for temperature changes.
- 45 psi plus 0-15, 30, 45, & 60 psi.



## PRO DIGITAL 2.5" FACE

p.35

- Reads to 0.1 psi.
- Accurate to 0.3%.
- Back light.
- 0-25 & 60 psi with dual bleed buttons.
- Includes Silver case.



## DELUXE 2.5" FACE

p.38

- Special valve compensates for temp changes.
- 45 psi plus 0-15, 30, 45, & 60 psi.



## SEMI PRO DIGITAL 2.5" FACE

p.36

- Reads to 0.1 psi, accurate to 0.5%, back light.
- 2.5" face, 0-60 psi.



## QUICK FILL 2.5" FACE

p.39

- Deluxe, Liquid Filled, Magnum™, or Digital.
- 0-60 psi.



## BASIC DIGITAL 2" FACE

p.36

- 2" Face, easy-to-read numbers to 0.2 psi.
- Accurate to 0.8%, 0-60 psi & 0-100 psi.



## BASIC TIRE GAUGE 2" FACE

p.39

- Accurate and reliable, great value.
- 0-15, 30 & 60 psi.
- Glow-in-the-dark face.



# A TOTALLY NEW KIND OF TIRE PRESSURE GAUGE

**Tire Pressure & Pyrometer Combined**



Angle and ball chuck included.

US Pat. #6,983,209

**TEMPERATURE COMPENSATING TIRE PRESSURE GAUGE TO 0.1 PSI**

If tire pressures are critical to your car's performance, closer than +/- 1 psi, then you really need what this gauge can do for you. Pressures must be set in the pits, but the tires sitting there can easily vary by as much as 20°. If you want the tire to grow to 38 psi on the track, you set it in the pits at 28 psi. Sounds reasonable. You have been doing it for years.

But what was the temperature in the pits? If it was 80° you are OK. But what if one or two had been in the sun and had crept up to 90°? For every 10° temperature change, there is a 0.8 psi change. So instead of 28 psi (at 90°) you effectively set it at 27.2 psi. (What it would have been at 80° rather than 90°?)

Would this make a difference? If it would, you really need to set all starting pressures at the same temperature, week in and week out. This way, the on-track pressures will be the same. But how do you do that? You will have great difficulty controlling the temperatures, and yet you need to.

A better way is to correct the pressures to what they would have been had you been able to keep the tires at a constant temperature. You could use a pyrometer to measure the tire's temperature, then use a calculator to compute what the pressure should be at that temp rather than just putting in 28 psi.

But you don't have to do that. This "Temperature Compensating Tire Pressure Gauge" will do it for you. It can take the temperature of the tire using a traditional tire temp probe, instantly calculate the correction back to a standard temperature, and show the pressure you should be putting in the tire. It may not be the actual pressure at that moment, but it will be the correct pressure when it counts on the track.

Find more information and compare with other Longacre® Gauges on p.36



## With Tire Temperature Probe

- Corrects tire pressures back to a standard temperature.
- Displays an estimate of the pressure at this temperature.
- Reads 0-100 psi by 0.1 psi.
- Will also function as a traditional tire pressure gauge showing actual pressures with all 4 stored on display.
- Works as a precision tire pyrometer, displaying all 12 tire temperatures at the same time.
- Back light for night use.

DESCRIPTION	PART #	PRICE
0-100 psi Gauge w/ Pyrometer & Case	52-53050	\$424.99
0-100 psi Gauge w/ Case Only	52-53053	\$379.99

### TRADITIONAL TIRE PRESSURE MODE:

Displays actual tire pressures.



### PYROMETER MODE:

Ultra fast response and displays all 12 temperatures so you don't need to write them down as you go.



### COMPENSATED PRESSURE MODE:

Displays what pressures would be at the standard temperature (80°F.)



# PRO DIGITAL TIRE GAUGES

**NEW AND IMPROVED ELECTRONICS WITH HIGHER ACCURACY & WIDER TEMPERATURE OPERATING RANGE.**

## ASPHALT

### 0-60 PSI • DUAL BLEED BUTTONS

- Accurate to 0.3%, reads to 0.1 psi.
- Rubber bumper protects 2.5" gauge.
- 17" Hose.
- Swivel chuck.
- Auto-Off feature to extend battery.
- Silver case included on all Pro Digital.

DESCRIPTION	PART #	PRICE
Gauge with Angle & Ball Chuck	52-53000	\$139.99

## DIRT LATE MODEL, SPRINT, KART

### 0-25 PSI • DUAL BLEED BUTTONS

- Reads to 0.1 psi.
- 2 Bleed buttons give faster adjustment at low pressures.

DESCRIPTION	PART #	PRICE
Gauge with Angle & Ball Chuck	52-53010	\$139.99

## METRIC DIGITAL TIRE GAUGE

### METRIC 0-4 BAR BY .01 BAR

DESCRIPTION	PART #	PRICE
Gauge with Angle & Ball Chuck	52-53060	\$139.99

## PRO DIGITAL TIRE GAUGE

### 0-125 PSI • FOR THE HAULER OR TRAILER

Reads to 0.5 psi.

DESCRIPTION	PART #	PRICE
Gauge with Angle & Ball Chuck	52-53028	\$139.99
Gauge with Foot Valve (No Angle & Ball Chuck)	52-53026	\$139.99

## QUICK FILL DIGITAL GAUGE

### 0-60 PSI

Connect to air line fill and bleed with one gauge. Reads to 0.1 psi.

DESCRIPTION	PART #	PRICE
Gauge with Angle & Ball Chuck	52-53008	\$169.99



Silver case included on all Pro Digital.

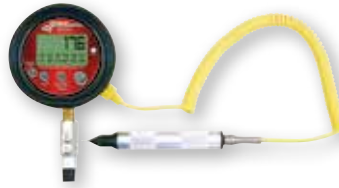


Angle and ball chuck included on most Tire Gauges.



## ULTIMATE DIGITAL 0-100 PSI

- Accurate to 0.1%, reads to 0.1 psi.
- 3.5" Face.
- Saves all 4 tire pressures on the display.
- Back light for night use.
- Swivel angle chuck and 17" hose for ease of use.
- 3 High volume bleed-off buttons for fast setting on pit stops.
- Includes Silver case.
- Ball chuck included.
- Comes with a rubber bumper for gauge protection.



Tire temperature pyrometer probe included with **52-53050** see p.34 for details.

DESCRIPTION	PART #	PRICE
0-100 psi Gauge w/ Pyrometer & Case	<b>52-53050</b>	\$424.99
0-100 psi Gauge w/ Case Only	<b>52-53053</b>	\$379.99



## SEMI PRO DIGITAL 0-60 PSI

- Reads to 0.1 psi 0.5% accuracy (0.5% of 1%).
- 2.5" Face with larger easy-to-read numbers.
- Back light for night use.
- Air release button, 17" hose and swivel chuck.

DESCRIPTION	PART #	PRICE
0-60 psi	<b>52-53003</b>	\$89.99



## BASIC DIGITAL 0-100 PSI • 0-60 PSI

- 2" Face with large numbers.
- Reads to 0.2 psi 0.8% accuracy.
- Air release button, 14" hose.

DESCRIPTION	PART #	PRICE
0-60 psi	<b>52-53006</b>	\$39.99
0-100 psi	<b>52-53036</b>	\$39.99

## PRO PRECISION TIRE GAUGE

### 4.5" FACE

- 0.5% Accuracy.
- Gauge bumper.
- Dual button air release.
- Swivel angle chuck.
- Holds reading until released.
- Comes with Silver case.



DESCRIPTION	PART #	PRICE
0-60 psi by 0.5 psi	52-52000	\$179.99

## MAGNUM™ TIRE GAUGE

### 3.5" FACE

- 3.5" Glow-in-the-dark face for high accuracy and the easiest readability.
- High flow release button, one piece swivel chuck.
- Holds pressure until released.
- Internal gauge damper for more consistent, accurate reading.
- 17" Hose with swivel.
- Comes with Silver case.



All Magnum™ gauges come with dual bleed buttons for faster setting.

DESCRIPTION	PART #	PRICE
0-60 by 0.5 lb.	52-52001	\$84.99
0-40 by 0.5 lb.	52-52011	\$84.99
0-30 by 0.25 lb.	52-52021	\$84.99
0-15 by 0.25 lb.	52-52031	\$84.99



Includes Silver carrying case.





**Special Equalizer Valve**  
Equalizes internal pressure for the most accurate readings.

## LIQUID FILLED 2.5" FACE

- 2.5" LF gauge with bumper.
- Holds pressure until released.
- Glow-in-the-dark dial face.
- 17" Hose with swivel chuck.
- 15 psi gauges come with dual bleed buttons for faster setting.



Dual Bleed Buttons

**SCAN THIS QR CODE TO SEE OUR VIDEO TUTORIAL ON: HOW TO CHANGE YOUR GAUGE CHUCK AND GAUGE HEAD**



DESCRIPTION	PART #	PRICE
0-60 psi by 1/2 psi	52-52002	\$59.99
0-45 psi by 1/2 psi	52-52012	\$59.99
0-30 psi by 1/2 psi	52-52022	\$59.99
0-15 psi by 1/4 psi	52-52032	\$59.99

**Note:** Liquid Filled gauges are filled to 85% to allow for temperature expansion.

## DELUXE TIRE GAUGE 2.5" FACE

- 2.5" Glow-in-the-dark face for easy readability.
- High flow release button and one piece swivel chuck.
- Holds pressure until released.
- Internal gauge damper for more accurate readings and longer life.
- 17" Hose and angle swivel chuck.

DESCRIPTION	PART #	PRICE
0-60 by 0.5 lb.	52-52003	\$49.99
0-40 by 0.5 lb.	52-52013	\$49.99
0-30 by 0.25 lb.	52-52023	\$49.99
0-15 by 0.25 lb. Dual Bleed	52-52033	\$49.99
Metric 0-4 BAR by 0.01 BAR	52-52073	\$49.99
0-100 Angle Chuck	52-52053	\$49.99
0-100 With 'Foot' Valve	52-52063	\$49.99



52-52063 Features 'Foot' valve for 'Dualities'.

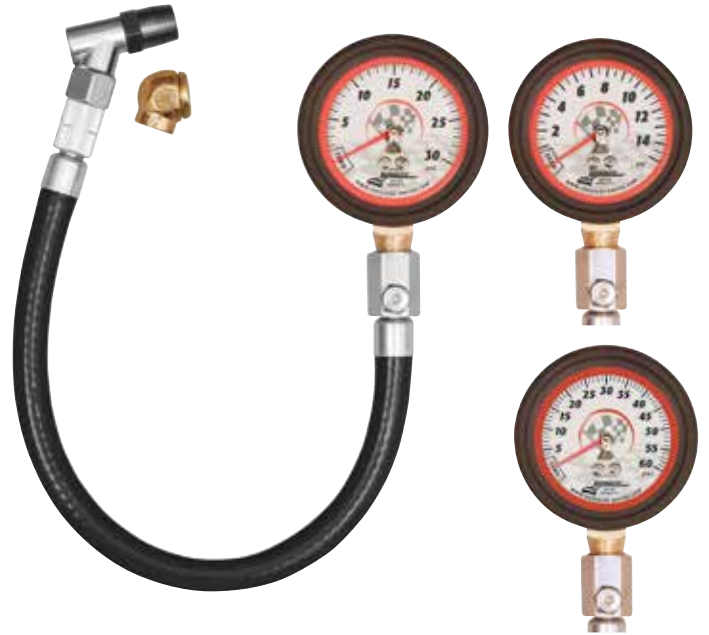


## BASIC TIRE GAUGE

### 2" FACE

- Air pressure release button.
- Internal gauge damper for more accurate readings and longer life.
- 2" Dial face, 14" hose and swivel chuck.
- Glow-in-the-dark dial faces.
- Note: Does not hold pressure.

DESCRIPTION	PART #	PRICE
0-60 by 1 lb.	52-52004	\$29.99
0-30 by 0.25 lb.	52-52024	\$29.99
0-15 by 0.25 lb.	52-52034	\$29.99



## QUICK FILL

### 2.5" & 3.5" FACE

- Connect your air line, press the lever, and fill your tires twice as fast.
- Bleed button for excess pressure.
- 4 Different dial or digital gauges.

DESCRIPTION	PART #	PRICE
2-1/2" Deluxe Gauge	52-52009	\$79.99
3-1/2" Magnum™ Gauge	52-52007	\$99.99
2-1/2" Liquid Filled Gauge	52-52008	\$84.99
2-1/2" 0-60 PRO Digital Gauge	52-53008	\$169.99



### DELUXE

52-52009



### LIQUID FILLED

52-52008



### DIGITAL

52-53008





## PRO-TEAM TIRELIEFS™ KIT INCLUDES SILVER CASE

• Kit includes: 6 TIRELIEF™ valves, 12 wheel adapters, setting tool, inflation adapter, and carrying case.

• TIRELIEFS™ are designed only to relieve normal tire pressure build-up on the track. They should not be used as a safety device.

DESCRIPTION	PART #	PRICE
Pro-Team TIRELIEFS™ Kit	52-50100	\$269.99



### QUICK CHANGE ADAPTER

- Makes quick work of changing or resetting TIRELIEFS™.
- Unscrew and remove the TIRELIEF™ valve from the rim without losing air pressure.
- Aircraft alloy aluminum, low profile.
- Installs in 5/8" hole in rim, use factory valve stem hole or drill a new one.

DESCRIPTION	PART #	PRICE
TIRELIEFS™ Kit	52-50240	\$49.99
Replacement Grommets 4*	52-50301	\$6.99

\*Not for use with 52-50265.



### INFLATION ADAPTER

- Use to air up tires when a quick change adapter is installed in the valve stem hole.
- Saves drilling a hole in the rim.

DESCRIPTION	PART #	PRICE
TIRELIEFS™ Kit	52-50220	\$14.99



### TIRELIEF™ SETTING TOOL

- Let's you set your TIRELIEFS™ valves before you install them in the rims.
- Uses compressed air to accurately simulate tire pressure.

DESCRIPTION	PART #	PRICE
0-60 psi	52-50290	\$49.99



### TIRELIEFS™ TIRE PRESSURE RELIEF VALVES

- Relieves tire pressure build-up automatically as you race.
- 3-40 psi range.
- 100 Mesh inlet filter, to keep dirt inside tire from plugging TIRELIEFS™.
- Lightweight aluminum, only 9 grams, won't affect wheel balance.
- To install, drill, and tap a 1/8" NPT thread in rim.

DESCRIPTION	PART #	PRICE
Set of 4	52-50000	\$89.99



### HI TEMP 400° SILICON VALVE STEM QC GROMMETS

DESCRIPTION	PART #	PRICE
TIRELIEF™ QC Grommets*	52-50301	\$6.99
TIRELIEF™ Replacement "O" Rings & Quad Seals - Set of 4	52-50008	\$14.99

\*Not for use with 52-50265.



### LOW PROFILE VALVE STEMS

- High temperature grommets.
- Low profile.
- Set of 4.
- Hole size to be drilled into the wheel: 5/8".

DESCRIPTION	PART #	PRICE
Brass Set of 4	52-50265	\$19.99



## DUROMETERS

### DIGITAL & DELUXE DIAL TYPE

- Straight edge on base to 'rock' durometer for more consistent results.
- Dial type reads from 0-100 points.
- Shore 'A' scale.
- Non-slip coating for better grip.
- Dial type calibration test block included.
- Dial type can be 'Zeroed'.
- Come with Silver case and pouch.

DESCRIPTION	PART #	PRICE
Digital Durometer	52-50547	\$104.99
Deluxe Dial Type Durometer	52-50546	\$69.99



Comes with Silver case and pouch.

### BASIC DUROMETER DIAL TYPE

- Racing tire hardness tester.
- Reads from 0-100 points.
- Dial can be 'Zeroed'. (Shore 'A' scale.)

DESCRIPTION	PART #	PRICE
Basic Dial Durometer	52-50553	\$59.99



### TREAD DEPTH GAUGES DIAL TYPE & PRO DIGITAL

- Dial Type reads in 1/32", accurate to 1/128".
- Pro Digital is the ultimate in digital accuracy, to 0.001".
- Quick and easy to use.
- Precision billet aluminum base.
- Can be easily field calibrated.

DESCRIPTION	PART #	PRICE
Digital Tread Depth Gauge with Silver Case	52-50565	\$219.99
Dial Tread Depth Gauge with Pouch	52-50560	\$24.99



### DUROMETER & TREAD DEPTH GAUGE SETS DIAL TYPE & DIGITAL

DESCRIPTION	PART #	PRICE
Dial Durometer & Tread Depth Gauge Set	52-50556	\$89.99
Digital Durometer & Tread Depth Gauge Set	52-50557	\$119.99



Includes Silver case & calibration test block.

# MEMORY TIRE PYROMETER

Large High Resolution 7" display shows all 12 temperatures at the same time. Memory for 100 sets of temps can be scrolled up or down to compare with current temperature. Includes a lightweight clipboard to hold the tablet and wireless probe.

- Fast response for quick temps - use the exclusive "Anticipation Mode" that uses a precision algorithm to predict the ultimate temperature. Makes taking all 12 temps even faster and more accurate.
- Computes tire temperature averages.
- Fast response tire probe with adjustable tip length.
- Comes with Silver carrying case.
- Comes with a 7" tablet (52-50650 Only) or use the tablet from your scales (or even a Smartphone). Just download the free app.



SCAN THIS QR CODE TO SEE OUR VIDEO TUTORIAL ON: **HOW TO USE A MEMORY TIRE PYROMETER**



SCAN THIS QR CODE TO SEE OUR VIDEO TUTORIAL ON: **HOW TO PAIR A TABLET TO A MEMORY TIRE PYROMETER**

DESCRIPTION	TABLET	PART #	PRICE
Pyrometer with Tablet	7" Included	52-50650	\$474.99
Pyrometer Probe fits 10" Tablet	Not Included	52-50747	\$299.99
Pyrometer Probe fits 7" Tablet	Not Included	52-50745	\$299.99

## DELUXE MEMORY TIRE PYROMETER

Memory stores 10 complete sets of temps (120 total) with quick and easy recall. Special software prevents accidental erasure of temps. Take tire temps in the pre-programmed order or select any order you prefer. Computes tire temp averages for temps just taken, recalled from memory, or you can even manually enter temps taken previously to compute averages. Advanced electronics stabilize your readings quickly giving you accurate, consistent results. Pyrometer comes with a built-in night light with auto shutoff, fast response coiled cord adjustable tire probe, and carrying case. It also features a built-in four car stopwatch with 70 lap memory for all 4 cars.

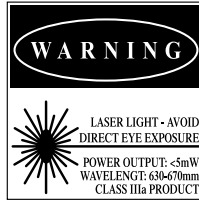
- Displays all 12 tire temperatures at the same time.
- Memory stores 10 complete sets of temperatures.
- Computes tire temperature averages.
- Built-in 4 car 70 lap Memory Stopwatch with interval timing.
- Electronics stabilize readings for consistent results.
- Takes temperatures in any order.
- Carrying case & adjustable probe included.
- Built-in night light.
- Uses 9 volt battery (included).
- Interval Timing: In addition to our 4 car built-in stopwatch function you can now get overall lap times plus 3 different segments within that lap. Check corner exit times, straightaway times, or individual corner times - any partial lap segment time you want.
- Adjust the probe depth to your preference or type of tire.
- Metric Option: Factory switchable to read in °F or °C.

DESCRIPTION	PART #	PRICE
Deluxe Memory Tire Pyrometer, Reads °F	52-50690	\$419.99
Deluxe Memory Tire Pyrometer, Reads °C	52-50691	\$419.99

See p.34 for info on our **TEMPERATURE COMPENSATING TIRE PRESSURE GAUGE**

## INFRARED LASER PYROMETER STANDARD & HIGH TEMPERATURE

- Instant response, non-contact temps.
- 600°F for Standard, 1400°F for High Temp.
- Reads Fahrenheit or Celsius.
- Back light for night use.
- Laser sighting for accuracy.
- Holds readings longer for easier use.



DESCRIPTION	PART #	PRICE
Infrared Laser Pyrometer	52-50612	\$79.99
High Temperature Infrared Laser Pyrometer	52-50615	\$139.99

## DUAL FUNCTION LASER PYROMETER WITH TIRE PROBE

- Use as a probe type pyrometer for tires or as non-contact IR pyrometer.
- Accurate, fast response in either mode.
- 1400° Range on IR, 500° range with tire probe.
- Reads Fahrenheit or Celsius.
- Includes tire probe and new Silver case.

DESCRIPTION	PART #	PRICE
Infrared Laser Pyrometer with Tire Probe	52-50620	\$219.99



## TIRE PYROMETERS BASIC & DELUXE

- Accurate, fast response.
- Reads Fahrenheit or Celsius.
- Low battery indicator and auto shut-off.
- 2000° Range on deluxe, 1400° range on basic (with proper probe.)
- Can hold highest temperature reached.
- Compares one temperature to another with the push of a button.
- Deluxe comes with coil cord tire probe and carrying case.
- Basic pyrometer comes with straight cord tire probe.

DESCRIPTION	PART #	PRICE
Basic Digital Tire Pyrometer	52-50635	\$119.99
Deluxe Digital Tire Pyrometer & Case	52-50640	\$149.99
Deluxe Digital Tire Pyrometer & Clipboard	52-50642	\$149.99



## TIRE TEMPERATURE CHARTS

- 2 Tire temperatures on front, chassis setup sheets on back.
- 1 Pad of 50 sheets.

DESCRIPTION	PART #	PRICE
Tire Temperature Charts	52-22528	\$14.99





## POLISHED AIR TANKS PORTABLE ULTRA LIGHTWEIGHT

- Available with or without filler tire gauge.
- Special Inlet valve fills tank in less than 15 seconds with adequate air supply.
- Filling most tanks can take 90 seconds of precious practice time.
- These tanks include a Universal Air Quick-Change coupler.

DESCRIPTION	PART #	PRICE
Deluxe 5 Gallon Tank - No Tire Pressure Gauge - with Special Inlet Valve	52-50316	\$139.99
Deluxe 5 Gallon Tank w/ Quick Fill Tire Pressure Gauge - Angle Chuck*	52-50315	\$209.99
Deluxe 5 Gallon Tank w/ Digital Quick Fill Tire Pressure Gauge - Angle Chuck*	52-50311	\$244.99

\*Gauges read 0-60psi.



NEW "Mini" TANK

36" Hose, tire chuck, standard fill valve.

## LIGHTWEIGHT AIR TANKS

DESCRIPTION	PART #	PRICE
Standard 5 Gallon Tank - No Tire Pressure Gauge	52-50305	\$99.99
Standard 2 Gallon Tank - No Tire Pressure Gauge	52-50308	\$89.99

### COMPACT VALVE CORE TOOL

- Aluminum body, steel tip.
- Put on your key chain, for quick access.



DESCRIPTION	PART #	PRICE
Core Tool	52-50272	\$6.99

### 4 WAY VALVE CORE REPAIR TOOL

- R & R valve cores.
- Recuts damaged threads.



DESCRIPTION	PART #	PRICE
Core Repair Tool	52-50274	\$4.99

### BILLET ALUMINUM VALVE CORE STEM TOOL

- Anodized billet aluminum with stainless steel tip.
- Includes 3 spare valve cores.
- Conveniently stores spare valve cores in the handle.



DESCRIPTION	PART #	PRICE
Core Stem Tool	52-50270	\$19.99

### FULL FLOW AIR FILLER CHUCK

- For filling tires.
- Not for gauges.
- Fitting not included.



DESCRIPTION	PART #	PRICE
Filler Chuck	52-50490	\$4.99

### TIRE GAUGE CHUCKS

- Swivel fitting for easy use.
- "Angle" style chuck.
- "Ball" chuck.



DESCRIPTION	PART #	PRICE
Angle Chuck	52-50496	\$9.99
Ball Chuck	52-50494	\$9.99

### TIRE MARKING STICK

Writes reliably on any surface.



DESCRIPTION	PART #	PRICE
Single Stick	52-50880	\$4.99
Box of 12 Bulk	52-50881	\$34.99

### UNIVERSAL AIR TOOL QUICK DISCONNECT

- Connects to all 3 common fittings.
- No more switching fittings to use that new or borrowed tool.



DESCRIPTION	PART #	PRICE
Pair	52-36013	\$9.99

### TIRE MARKING PEN

- Makes a finer line, easy to read.
- Mark tire sizes, pressures, etc.
- Silver paint won't come off from heat.



DESCRIPTION	PART #	PRICE
Single Stick	52-50882	\$6.99
Box of 12 Bulk	52-50883	\$69.99

# STEPPER MOTOR GAUGES

THE NEXT GENERATION IN INSTRUMENTATION.



**52-46540**  
Oil Pressure 0-100 psi



**52-46535**  
Fuel Pressure 0-15 psi  
**52-46538**  
Fuel Pressure 0-100 psi



**52-46545**  
Water Temperature 100°-280°  
**52-46548**  
Water Temperature 100°-340°



**52-46553**  
Oil Temperature 100°-340°  
**52-46550**  
Oil Temperature 100°-280°



**52-46555**  
Volt 8-18 V

- Stepper motor gauges use a small electronic motor that only turns in tiny fractions of a rotation to drive the pointer.
- Built-in warning lights, ultra bright 2 stage LED 2 setpoints are easily adjusted to your needs, critical oil pressure has 3 setpoints. For example set water temperature for just above normal running temperature. If you run 215°, set it at 230°. The LED comes on to let you know the motor is starting to get warm. Set the second one at the max temperature

your engine can tolerate, for example 250°. Next, the LED flashes to attract your attention, possibly saving motor damage.

- Since oil pressure is so critical, it has 3 set points. You can set the first just below normal running pressure. At this point, the LED comes on. Set the second at 35 psi. The LED flashes, you need to know here, possible damage. Set the third at 20 psi., engine damage is likely here. At this third setpoint the LED continues to flash, also the gauge backlight changes

color and starts to flash. It allows you to get the engine shut down before it blows up.

- Gauges are 2.625" and have a lightweight molded polycarbonate/ABS case.
- Pressure transducers used in electronic measurement (including Longacre® SMI™ sensors) are vulnerable to the harsh vibrations of an engine. For best reliability, keep your SMI™ Pressure sensors mounted on the firewall using the Longacre® Firewall Mount Manifold.

DESCRIPTION	PART #	PRICE
Oil Pressure 0-100 psi	52-46540	\$159.99
Fuel Pressure 0-15 psi	52-46535	\$159.99
Fuel Pressure 0-100 psi	52-46538	\$159.99
Water Temperature 100°-280°	52-46545	\$109.99
Water Temperature 100°-340°	52-46548	\$109.99
Oil Temperature 100°-340°	52-46553	\$109.99
Oil Temperature 100°-280°	52-46550	\$109.99
Volt 8-18 V	52-46555	\$109.99



Sensors are included with all gauges.



SCAN THIS QR CODE TO SEE OUR VIDEO ON: **SMI™ GAUGE FEATURES & FAQ**

## SPORTSMAN™ GAUGES



**52-46511**  
Oil Pressure 0-100 psi



**52-46506**  
Fuel Pressure 0-15 psi



**52-46516**  
Water Temp. 100°-280°



**52-46521**  
Oil Temp. 100°-340°

DESCRIPTION	PART #	PRICE
Oil Pressure 1-100 psi	52-46511	\$34.99
Fuel Pressure 0-15 psi	52-46506	\$39.99
Water Temperature 100°-280°	52-46516	\$49.99
Oil Temperature 100°-280°	52-46521	\$49.99

- Quality built mechanical racing gauges.
- Viscous damped pointers for steady readings.
- Solid brass CNC machined gears.
- Gauges come complete with back lights, temperature manifold fittings, and brackets.

# MEMORY TACHS & TACH PANELS



## "STEPPER MOTOR" SMi™

### 4.5" MEMORY TACHS

"Stepper Motor" tachs use a small electric motor to drive the pointer. It is more precise than the more common 'aircore' instruments whose accuracy can be affected by the windings.

- SMi™ AccuTech™ 4.5" Memory Tach.
- Maximum RPM recall.
- High RPM Warning light: 2 stage. First warning can be set for just over your normal maximum RPM, the second stage at the redline. You get a warning of too many revs before you blow an engine. Can also be used as a 2 stage shift light.
- LED back light shows through the dial face and the pointer is LED illuminated to make this the easiest tach to read.
- Stepper motor precision tach at an affordable price.

DESCRIPTION	PART #	PRICE
Tach Only	52-44384	\$189.99
Tach with Panel	52-44477	\$219.99



## SILVER FACE SMi™

### STEPPER MOTOR MEMORY TACHS

- Much more accurate than traditional 'air core' tachs.
- Recalls max RPM with one button.
- 4.5" LED backlit face.
- High RPM warning light to help prevent over revving expensive motors.

DESCRIPTION	PART #	PRICE
Tach Only	52-44381	\$189.99
Tach with Panel	52-44389	\$199.99



## DLi™ DATA LOGGING

### 4" STEPPER MOTOR TACHS

- DLi™ Tach: better than only 3 or 4 highs and lows.
- See all the highs and lows to closely analyze RPM changes.
- Records RPM all around the track. Replay in the pits.
- Playback can be real time, 1/2 speed, or double to see a full lap quickly.
- You can record multiple sessions or just highest RPM if that's all you need.
- Multi-stage progressive shift light for precision shift points or a pit road speed indicator.
- The 2 stage high RPM warning light will help prevent over-revving expensive motors.
- The numbers are LED backlit and the pointer is illuminated for easy reading.

DESCRIPTION	PART #	PRICE
Tach Only	52-44390	\$299.99
Tach with Panel	52-44479	\$329.99

## DIGITAL MEMORY TACH



- Accuracy to within 10 RPM.
- Ultra lightweight only about 1.5 oz.
- Fast response, easy recall.
- High RPM warning light, helps prevent accidental over revving of expensive motors.
- Tach function is self powered.
- Battery lasts 300+ hours, with the option to connect to car's power for back light and warning light.
- Includes mounting bracket.

DESCRIPTION	PART #	PRICE
0 - 10,000 RPM Digital Memory Tach	52-44391	\$199.99
0 - 19,000 RPM Digital Memory Tach	52-44402	\$229.99

# SMi™ BLACK ALUMINUM PANELS

## NEW SMi™ STEPPER MOTOR GAUGES IN BLACK ALUMINUM PANELS



- Gauges have built-in multi-stage warning lights and allow you to set your preference.
- Numbers and pointer are LED backlit for easy viewing, day and night.
- Panels are completely wired and ready to install. Just connect 4 wires to your car.
- Includes all sensors.

DESCRIPTION	PART #	PRICE
2 Gauge – Oil Pressure, Water Temperature	52-44460	\$269.99
3 Gauge – Oil Pressure, Water Temperature, Oil Temperature	52-44461	\$379.99
3 Gauge – Oil Pressure, Water Temperature, Fuel Pressure-15 psi	52-44463	\$424.99
3 Gauge – Oil Pressure, Water Temperature, Fuel Pressure-100 psi	52-44465	\$424.99
4 Gauge – Oil Pressure, Water Temperature, Oil Temperature, FP-15 psi	52-44467	\$524.99



Pre-wired and ready to install. Saves time and hassle. Panels are also available with 100 psi fuel pressure and volt meter gauges. Please call for part numbers and pricing.

## NEW SMi™ STEPPER MOTOR GAUGES IN BLACK ALUMINUM PANELS WITH SMi™ STEPPER MOTOR MEMORY TACHS



- All gauges and tachs have multi-stage built-in warning lights easily set by user.
- Pre-wired, includes all sensors and ready to install.
- All gauges and tachs are LED backlit for best viewability.

DESCRIPTION	PART #	PRICE
2 Gauge - Oil Pressure, Water Temperature	52-44470	\$474.99
3 Gauge - Oil Pressure, Water Temperature, Oil Temperature	52-44471	\$574.99
3 Gauge - Oil Pressure, Water Temperature, Fuel Pressure-15 psi	52-44473	\$599.99
4 Gauge - Oil Pressure, Water Temperature, Oil Temperature, Fuel Pressure-15 psi	52-44475	\$724.99
4 Gauge Illuminated - Oil Pressure, Water Temperature, Oil Temperature, Fuel Pressure-100 psi	52-44485	\$499.99



## ADDITIONAL MANIFOLD SPARE MOTOR FITTINGS FOR TEMP GAUGES

For AccuTech™ (Sportsman™ and SMi™) and most other major brands of water and oil temperature gauges.

DESCRIPTION	PART #	PRICE
1/2" NPT Manifold Fitting	52-46150	\$9.99
3/8" NPT Manifold Fitting	52-46160	\$9.99
1/4" NPT Manifold Fitting	52-46181	\$14.99



## GAUGE LINES STEEL BRAIDED

- SS braided Teflon lines.
- Can be removed and replaced over again without breaking or leaking.



DESCRIPTION	PART #	PRICE
24" With Block Fitting	52-45020	\$24.99
36" With Block Fitting	52-45030	\$29.99
48" With Block Fitting	52-45040	\$34.99
60" With Block Fitting	52-45050	\$39.99



## BLOCK FITTINGS FOR OP & FP GAUGES

DESCRIPTION	PART #	PRICE
1/8" NPT to #4 AN Straight Oil Pressure Block Fitting	52-45240	\$4.99
1/8" NPT to #4 AN 90° Oil Pressure Block Fitting	52-45230	\$5.99



## FIREWALL MOUNT MANIFOLD FOR ELECTRIC PRESSURE GAUGE SENSORS

Pressure transducers used in electronic measurement (including Longacre® SMi™ sensors) are vulnerable to the harsh vibrations of an engine. For best reliability, keep your SMi™ Pressure sensors mounted on the firewall using the Longacre® Firewall Mount Manifold.

DESCRIPTION	PART #	PRICE
Manifold Only for OP and/or FP	52-43541	\$14.99



## EXTRA SMi™ SENSORS FOR YOUR SPARE MOTORS

Sensors are included with all SMi™ panels.

DESCRIPTION	PART #	PRICE
0-100 psi Oil or Fuel Pressure	52-43520	\$74.99
0-15 psi Fuel Pressure	52-43510	\$74.99
100-280° Water or Oil Temperature	52-43500	\$39.99
100-340° Water or Oil Temperature	52-43505	\$39.99



## SMi™ WIRE HARNESS

DESCRIPTION	PART #	PRICE
Wire Harness - SMi™ VOLT Gauge	52-43533	\$4.99
Wire Harness - OP Gauge	52-43534	\$9.99
Wire Harness - WT/OT Gauge	52-43536	\$9.99
Wire Harness - FP Gauge	52-43532	\$9.99
SMi™ Press Sensor Wire- FP/OP	52-43530	\$5.99





# ALUMINUM PANELS WITH SMi™ STEPPER MOTOR MEMORY TACHS

## SPORTSMAN™ MECHANICAL GAUGES

- Maximum RPM recall. Just push the “Recall” button.
- High RPM warning light helps prevent over-revving expensive motors.
- Tach has LED back light, shows through the dial face, and the pointer is LED illuminated.
- Sportsman™ gauges are pre-wired and come with warning lights and all senders.



DESCRIPTION	PART #	PRICE
2 Gauge Oil Pressure, Water Temperature	52-44440	\$299.99
3 Gauge Oil Pressure, Water Temperature, Oil Temperature	52-44441	\$349.99
3 Gauge Oil Pressure, Water Temperature, Fuel Pressure	52-44443	\$349.99
4 Gauge Oil Pressure, Water Temperature, Oil Temperature, Fuel Pressure	52-44445	\$379.99

# ALUMINUM PANELS

## SPORTSMAN™ MECHANICAL GAUGES

- Gauges have viscous-damped pointers for steady readings.
- Gauge mechanism uses solid brass CNC machined gears.
- Panels are pre-wired, ready to install, and have all senders.



Wiring is premium fine strand with high temperature silicone insulation, soldered and heat shrunk terminals.

DESCRIPTION	PART #	PRICE
2 Gauge Oil Pressure, Water Temperature	52-44430	\$109.99
3 Gauge Oil Pressure, Water Temperature, Oil Temperature	52-44431	\$169.99
3 Gauge Oil Pressure, Water Temperature, Fuel Pressure	52-44433	\$169.99
4 Gauge Oil Pressure, Water Temperature, Oil Temperature, Fuel Pressure	52-44435	\$209.99



## SPRINT CAR GAUGE PANEL DESIGNED TO STAY WITH MOTOR

- Ultra lightweight weather resistant aluminum gauges with shock reducing rubber mounting "O" rings and genuine carbon fiber panel.
- Includes mag kill switch and low oil pressure warning light (9 volt battery powered), 52-44423 only.
- Mounts from engine side of firewall, attach with Dzus™ fasteners, permanently mount.

DESCRIPTION	PART #	PRICE
Sprint Car Panel	52-44423	\$209.99
Sprint Car Panel Without Light/Switch	52-44421	\$179.99



## LIQUID FILLED BRAKE BIAS BLACK ALUMINUM PANELS MINI & FULL SIZED

- Mini panel includes two 1.5" 1500 psi gauges and fittings with bleeders.
- Full size panel includes two 2.5" 1500 psi gauges and fittings with bleeders.
- See exactly what your balance is.
- Liquid Filled Gauges are not filled to the top.

DESCRIPTION	PART #	PRICE
Full Size Brake Bias Panel	52-44134	\$89.99
Mini Brake Bias Panel	52-44124	\$79.99

## GENUINE CARBON FIBER SWITCH PANELS



- High capacity 40 amp switches (at 12 volts) with rubber switch boots to seal out moisture.
- Red safety flip-up switch covers.
- High insulation wiring with soldered terminals.

DESCRIPTION	PART #	PRICE
Ignition & Start	52-44510	\$59.99
Ignition, Start & 2 Accessory Switches	52-44535	\$89.99

## BOLT-ON SWITCH PANEL MOUNTING BRACKETS



- Mount your switch panel quickly and easily. Switch panels only, not for battery disconnect or gauge panels.
- Includes 2 brackets.

DESCRIPTION	PART #	PRICE
1-1/3" Bar-Universal	52-22783	\$49.99
1-1/2" Bar-Universal	52-22787	\$49.99

## HEAVY DUTY WIRING HARNESS



- Plugs into all Longacre® switch panels.
- Color coded wires match Longacre® dash panels.

DESCRIPTION	PART #	PRICE
Heavy Duty Wiring Harness	52-44930	\$29.99

# BLACK ALUMINUM SWITCH PANELS

## START/IGNITION PANELS

- High capacity (40 amp @ 12 volts DC) ignition switch and starter button with weatherproof covers.
- Great looking Aluminum Panel - black anodized with clean, modern graphics.
- Pre-wired with high insulation "Fat" wires and soldered terminals with heat shrunk connections.
- Plugs into Longacre® wiring harness.

DESCRIPTION	PART #	PRICE
Start/Ignition Panel	52-44861	\$39.99
Start/Ignition Panel with Flip-Up Safety Cover & Pilot Light	52-44863	\$44.99



52-44861



52-44863



All of our switch panels use 12 Volt HD 40 amp ignition switches, HD start buttons, and high capacity wire with soldered and heat-shrunk terminals. They are pre-wired and ready to install.

Most of these switch panels include an optional weatherproof switch cover if you prefer that style. Easy to change.



52-44869



52-44866



52-44867

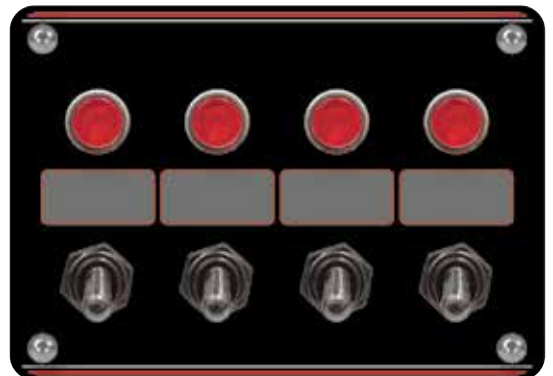


52-44871



52-45760

DESCRIPTION	PART #	PRICE
Start/Ign. Panel: Flip-Up Safety Cover, 4 Acc. Switches & Pilot Lights	52-44869	\$99.99
Start/Ign. Panel: Flip-Up Safety Cover, 1 Acc. Switch & Pilot Lights	52-44866	\$69.99
Start/Ign. Panel: Flip-Up Safety Cover, 2 Acc. Switches & Pilot Lights	52-44867	\$64.99
Start/Ign./ Master Disconnect Panel: Flip-Up Safety Cover & Pilot Light	52-44871	\$79.99
Battery Disconnect Panel Switch 2 Post	52-45760	\$39.99
Battery Disconnect Panel Switch 4 Post Altn.	52-45784	\$39.99
Panel With 4 Acc. Switches & Pilot Lights	52-44865	\$59.99



52-44865

# HEAVY DUTY 40 AMP SWITCHES

- SILVER PLATED CONTACTS.
- SOLID BRASS MECHANISMS.
- TOUGH PHENOLIC BODIES.

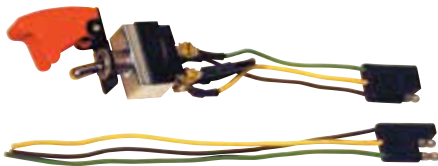
## IGNITION SWITCH



With silicone rubber weatherproof switch cover and 2 terminals.

DESCRIPTION	PART #	PRICE
Switch, Cover, Terminals	52-45420	\$14.99
Weatherproof Switch	52-45423	\$19.99
3 Terminal Switch	52-45430	\$19.99
Momentary Toggle Start	52-45462	\$14.99

## IGNITION/START SWITCH COMBINATION



- Pre-wired with color coded harness and flip-up switch cover.
- 1 Switch does it all.
- Down is off.
- Middle is ignition on.
- Up is momentary start

DESCRIPTION	PART #	PRICE
Ignition/Start Switch Combo	52-45490	\$39.99

## REPLACEMENT COVERS



DESCRIPTION	PART #	PRICE
Black Weatherproof Cover	52-45300	\$4.99
Red Flip-Up Safety Cover	52-45370	\$14.99

## IGNITION SWITCH WITH FLIP-UP COVER



- Shut off quickly in an emergency like a stuck throttle.
- Prevents accidental turn on of ignition.

DESCRIPTION	PART #	PRICE
HD Switch, Safety Cover, Terminals	52-45470	\$19.99

## MAGNETO SWITCH



- 2 Circuits that kill mag and shut-off accessories.
- Weatherproof cover.

DESCRIPTION	PART #	PRICE
Switch & Cover	52-45440	\$29.99

## STARTER BUTTON



Push Button with weather proof rubber cover and 2 terminals.

DESCRIPTION	PART #	PRICE
Starter Button	52-45460	\$14.99

## STARTER SOLENOID KIT WITH FIREWALL STARTER BUTTON



- High capacity extra heavy duty metal cased solenoid, wiring harness, and remote starter button.
- Remote start button is great for setting valves, etc.

DESCRIPTION	PART #	PRICE
Complete Kit	52-45800	\$49.99
Complete Kit with Start Button	52-45803	\$59.99
Solenoid Only	52-45900	\$29.99

## BATTERY DISCONNECT SWITCHES

- Battery disconnect switches with a bright red handle.
- Easier to find in an emergency.
- Prevents battery drain.
- 175 Amp Continuous Rating, 6-36 Volt, 1000 Amps peak alternator circuit 20 amps. (Except 52-45782, 125 amps.)



52-45749



52-45748



52-45750  
52-45780



52-45782

DESCRIPTION	PART #	PRICE
2 Terminal for Cars without Alternator in Aluminum Panel	52-45760	\$39.99
4 Terminal for Cars with or without Alternator in Aluminum Panel - Alternator Circuit 20 Amps	52-45784	\$39.99
4 Terminal Extra High Capacity - Alternator Circuit 125 Amps with Panel	52-45783	\$79.99
2 Terminal for Cars without Alternator - Switch Only	52-45750	\$29.99
4 Terminal for Cars with or without Alternator - Switch Only, Alternator Circuit 20 Amps Max	52-45780	\$34.99
2 Terminal Push-Pull - Switch Only, Shut Off Entire Electrical System in an Emergency with a Quick 'Hit'	52-45749	\$29.99
Economy Battery Disconnect Switch - Switch Only	52-45748	\$19.99
4 Terminal, Extra High Capacity - Alternator Circuit Carries 125 Amps, Battery Circuit 175 Amps Cont.- Switch Only*	52-45782	\$69.99

\*Needed for cars using very high capacity alternators.

## WEATHERPROOF SWITCHES

### SEALED WITH TOUGH POLYMER COATING

DESCRIPTION	PART #	PRICE
Battery Disc., Weatherproof 2 Terminal with Panel	52-45760	\$39.99
Battery Disc., Weatherproof 4 Terminal with Panel, Alternator 20 amps MAX	52-45784	\$39.99
Extra High Capacity Weatherproof 4 Terminal with Panel	52-45791	\$99.99
HD 40 amp Ignition Switch	52-45423	\$19.99
Starter Button	52-45466	\$19.99
Battery Disconnect 2 Terminal	52-45753	\$49.99
Battery Disconnect 4 Terminal - Alternator 20 amps MAX	52-45788	\$49.99
Extra High Capacity Battery Disconnect 4 Terminal	52-45789	\$89.99



## BATTERY ACCESSORIES

DESCRIPTION	PART #	PRICE
Remote Battery Positive (Red)	52-45720	\$19.99
Remote Battery Negative (Black)	52-45740	\$19.99
2 Battery Cable Ends	52-45660	\$4.99
Battery Through Panel	52-45700	\$14.99
Universal Battery Terminal	52-45680	\$14.99



- Makes it easier to jump start or charge the battery.
- Color coded protective boot.



- For safely running battery cable through your firewall.
- Prevents shorts.



## WEATHER PACK CONNECTOR KITS

- Seals out dirt and water.

DESCRIPTION	PART #	PRICE
1 Pin	52-44911	\$9.99
2 Pin	52-44912	\$9.99
3 Pin	52-44913	\$14.99
4 Pin	52-44914	\$14.99
6 Pin	52-44916	\$14.99
Weather Pack Replacement M/F Pins and Seals (10 Each)	52-44919	\$14.99



## WEATHER PACK CRIMP TOOL WITH CRIMP DIES

- Use with Weather Pack connector kits.
- Fast and easy.
- Ratchet style crimper insures a positive connection.

DESCRIPTION	PART #	PRICE
Crimp Tool & Dies	52-44905	\$119.99



## REAR BATTERY CABLE KIT

- Ends are factory soldered and include an extra terminal just in case you need to change the length.
- Kit includes high amp battery cable, end terminals, color coded terminal boots to prevent arcing, Firebraided™ insulation, firewall grommet, Adel™ clamps, and wire ties.
- The longer your battery cables are, the heavier gauge they need to be.

DESCRIPTION	PART #	PRICE
13' 1/0 Cable, Battery Behind Differential	52-48050	\$119.99
10' #2 Cable, Battery Behind Driver	52-48000	\$89.99

## ADEL™ LINE CLAMPS



- High temperature neoprene lining makes a neat and safe installation.
- Keeps lines and wiring where they belong.

DESCRIPTION	PART #	PRICE
3/16" ID Steel Brake Lines - 10 Pack	52-47000	\$9.99
3/16" ID Steel Brake Lines - 100 Pack	52-47050	\$59.99
5/16" ID #4 An Lines - 10 Pack	52-47100	\$9.99
5/16" ID #4 An Lines - 100 Pack	52-47150	\$69.99
9/16" ID Fuel Line - 10 Pack	52-47200	\$14.99
9/16" ID Fuel Line - 100 Pack	52-47250	\$69.99
13/16" ID #8 An Line - 10 Pack	52-47300	\$14.99
13/16" ID #8 An Line - 100 Pack	52-47350	\$89.99
15/16" ID #10 & 12 Lines - 10 Pack	52-47400	\$14.99
15/16" ID #10 & 12 Lines - 100 Pack	52-47450	\$79.99
1-3/16" ID #16 An Lines - 10	52-47500	\$19.99

## PIN EXTRACTION TOOL



Required for safe removal of pins from Weather Pack housing.

DESCRIPTION	PART #	PRICE
Pin Extraction Tool	52-44909	\$14.99

## GROUND STRAP HEAVY DUTY



Braided 14" long to complete the installation.

DESCRIPTION	PART #	PRICE
Ground Strap Heavy Duty	52-48110	\$19.99



## DELUXE BATTERY CABLE KIT

- Includes solenoid and battery disconnect switch.
- Ends are factory soldered for quick, simple installation.
- Includes ground cable and all cables from battery to switch.
- Starter cable heat protected with Firebraided™.

DESCRIPTION	PART #	PRICE
Deluxe Battery Cable Kit	52-48115	\$179.99

## 110V FLANGE MOUNT CONNECTION



Great for dry sump oil heaters.

DESCRIPTION	PART #	PRICE
110V Flange Mount Connection	52-45662	\$29.99

# GAGELITES™

## ENGINE WARNING LIGHT SYSTEMS

DESCRIPTION	COMPLETE KIT		SENDER ONLY	
	PART #	PRICE	PART #	PRICE
20 psi Oil Pressure 1/8" NPT	52-40000	\$24.99	52-43080	\$29.99
15-50 psi Oil Pressure 1/8" NPT	52-40100	\$39.99	52-43000	\$29.99
230° Water Temperature 1/2" NPT	52-40150	\$24.99	52-43250	\$19.99
230° Water Temperature 3/8" NPT	52-40152	\$24.99	52-43252	\$24.99
250° Water Temperature 1/2" NPT	-	-	52-43300	\$24.99
270° Oil Temperature 1/2" NPT	52-40350	\$29.99	52-43350	\$19.99
300° Oil Temperature 3/8" NPT	52-40400	\$29.99	52-43400	\$19.99
2-7 psi adj. Fuel Pressure 1/8" NPT	52-40250	\$34.99	52-43020	\$24.99
4 psi Fuel Pressure 1/8" NPT	52-40251	\$29.99	52-43021	\$14.99



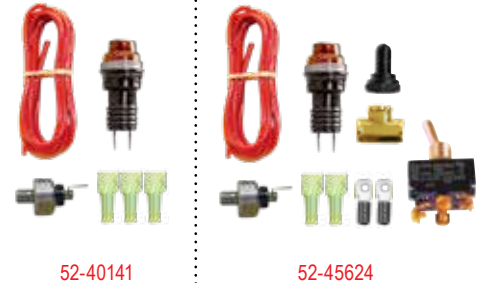
Kit includes sender, light, wire, and terminals.

## WARNING LIGHT KITS

### WATER & LOW OIL PRESSURE

- WP Kit: Light comes on if you have sudden loss of coolant pressure.
- WP Kit: Alerts you to a punctured radiator or burst hose, helps prevent expensive engine damage.
- OP Kit: For cars without batteries.
- OP Kit: Includes holder for lightweight 9V battery (not included), low oil pressure switch (20 psi), warning light, heavy duty mag kill switch with weatherproof switch cover, wire, and terminals.

DESCRIPTION	PART #	PRICE
Water Pressure Warning Light Kit	52-40141	\$29.99
Water Pressure Warning Light Kit - Sender Only	52-43241	\$19.99
Low Oil Pressure Warning Light Kit	52-45624	\$44.99



## REPLACEMENT LIGHT ASSEMBLIES

New brighter design same as on panels (install in 3/4" hole).



DESCRIPTION	PART #	PRICE
Clear	52-41801	\$9.99
Red	52-41802	\$9.99
Amber	52-41803	\$9.99
Green	52-41804	\$9.99
Blue	52-41805	\$9.99

## SWITCH PANEL PILOT LIGHT REPLACEMENT

DESCRIPTION	PART #	PRICE
Pilot Light Replacement	52-42300	\$9.99



## LOW OIL PRESSURE IGNITION OR ELECTRIC FUEL PUMP SHUTOFF SWITCH

- Switch shuts off the ignition or electric fuel pump when oil pressure drops below 12 psi.
- Helps prevent engine damage or fire and keeps the motor from starting until the oil pressure is up.
- Should be used with momentary bypass switch for starting.



DESCRIPTION	PART #	PRICE
Switch	52-43600	\$29.99
Momentary Bypass Switch	52-45462	\$14.99

Temperature and barometric pressure.



Comes with Silver case.

Baseline air density and difference.



## DIGITAL AIR DENSITY GAUGE

- Accurate electronic air density measurement with easy-to-read digital display.
- Shows your baseline so you don't forget.
- A red LED flashes to let you know if you need to change jets (air density has changed since baseline.)
- Also displays current temp and barometric pressure.

DESCRIPTION	PART #	PRICE
Digital Air Density Gauge	52-50887	\$179.99



## COIL-OVER WRENCH BILLET ALUMINUM

- Billet aluminum keeps coil-overs undamaged.
- Replaceable stainless steel pin.
- Comfortable handle with rounded edges makes adjustments easy.

DESCRIPTION	PART #	PRICE
Coil-Over Wrench	52-22589	\$44.99



## LONGACRE® TRACK MAT

- Thicker, high density padding for more comfort.
- Makes work under the car more comfortable.
- Folds up for easy storage, thick vinyl for durability.
- Dirt and oil resistant for quick clean-up.

DESCRIPTION	PART #	PRICE
Single Track Mat	52-11175	\$29.99
Set of 2 Track Mats	52-11180	\$49.99



## OIL FILTER CUTTER BILLET ALUMINUM

- Billet anodized aluminum, ball bearings.
- Cuts smaller filters too, from 2-3/8" to 5" in diameter.
- Cut your old filter open to spot problems before they cost you an engine.

DESCRIPTION	PART #	PRICE
Oil Filter Cutter	52-77750	\$74.99



## ENGINE LEAK DOWN TESTER

### DIAL MODEL

- Easy-to-use tester checks ring seal, valves, and head gaskets.
- Quickly tell from the outside when your engine needs an overhaul.

DESCRIPTION	PART #	PRICE
With 14 mm Spark Plug Fitting	52-73010	\$119.99
With 12 mm Spark Plug Fitting	52-73011	\$119.99
14 mm Replacement Hose for Leak Down Tester	52-73012	\$29.99
12 mm Replacement Hose for Leak Down Tester	52-73013	\$29.99



## LEAK DOWN TESTER

### DIGITAL

- Much more accurate than traditional testers.
- Reads critical leak down to 0.5% (0.5 of 1%).
- Gauges have back lights for easy readability and low battery indicators.
- 14mm Spark plug connector included (12 mm and barrel valve available.)
- Control inlet valve avoids shock to gauges when air is turned on, allowing more accurate readings, easier use, and longer gauge life.

DESCRIPTION	PART #	PRICE
Tester with Silver Case	52-73014	\$219.99
Tester with 12 mm Fitting	52-73015	\$219.99



## DIGITAL SHOCK INFLATORS

- Easy to read and use with controlled flow valves.
- 300 psi Digital gauge easily reads to 0.5 psi.
- Controlled flow inlet and bleed valves makes precision shock settings much easier.
- Special chuck prevents pressure loss and inaccurate settings.
- Extra long hose makes filling shocks on car a snap.
- Fill and bleed quickly and accurately.
- Inlet valve prevents air contamination when not in use, connect directly to nitrogen line.

DESCRIPTION	PART #	PRICE
Digital Shock Inflator	52-50473	\$179.99



## BASIC SHOCK INFLATORS

### DIAL MODEL & DIGITAL

- Both models read to 300 psi by 0.5 psi units.
- Digital model includes special chuck that prevents pressure loss.

DESCRIPTION	PART #	PRICE
Dial Model Shock Inflator	52-50493	\$99.99
Digital Model Shock Inflator	52-50483	\$119.99





## AccuLevel™ DIGITAL LEVELS PRO MODEL

- Back light for dark places under car.
- Measure suspension and spoiler angles.
- Includes Silver case.
- Reads to 0.1° (1/10°) – from 0 to 90°.
- Simple to use, easy to read, accurate.
- Can be field calibrated to maintain accuracy.
- Used in our Digital Caster/Camber gauges.



DESCRIPTION	PART #	PRICE
Pro Model AccuLevel™ Digital Level	52-78311	\$124.99



## AccuLevel™ DIGITAL LEVELS BASIC MODEL

- Measure suspension and spoiler angles and lots more.
- Reads to 0.1° +/- from 0 to 90°.
- Simple to use, easy to read, accurate.
- Can be quickly field calibrated to maintain accuracy.

DESCRIPTION	PART #	PRICE
Basic Model AccuLevel™ Digital Level	52-78310	\$94.99



## IMPACT PIT GUN SOCKETS

- 1/2" Drive impact grade sockets for 1" lug nuts.
- 6 Point design.
- 12" Extended design for deep wheels.
- Spring loaded to pop out lug nuts fast.



DESCRIPTION	PART #	PRICE
Impact Socket - Extended 12" L	52-68528	\$59.99
Impact Socket - Deep Well 3" L	52-68524	\$19.99

## CNC IMPACT SOCKETS

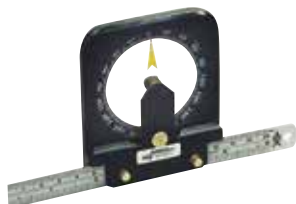
- 1/2" Drive impact grade sockets for 1" lug nuts.
- CNC Machined from SAE 4340 alloy billet.
- Double heat treated for severe service.
- Special machined socket grabs the flats and instantly kicks out the lug nuts for ultra fast pit stops.



DESCRIPTION	PART #	PRICE
CNC Impact Deep Well 3 1/4" L	52-68526	\$59.99
CNC Impact Short Socket 2 1/4" L	52-68525	\$59.99

## ANALOG STYLE ANGLE FINDER

- Use for front & rear suspension, etc.
- Ball bearing pivot.
- Liquid filled.
- Bind free at any angle.



DESCRIPTION	PART #	PRICE
Angle Finder	52-50815	\$69.99

## PLUMB BOB KIT

- Square rear end.



DESCRIPTION	PART #	PRICE
Plumb Bob Kit	52-50820	\$29.99

## HOT SLEEVE

- Protects arms from burns while working around engine.
- Made of Kevlar®.
- Right or left arm.
- Washable.



DESCRIPTION	PART #	PRICE
Single Sleeve	52-11230	\$24.99

## SAFETY WIRE

- 0.032 Stainless steel wire.

DESCRIPTION	PART #	PRICE
Safety Wire	52-22599	\$19.99



## SAFETY WIRE PLIERS

- Ensures parts stay on your car.
- Quickly and neatly twists wire.
- A must for all high vibration locations.

DESCRIPTION	PART #	PRICE
Safety Wire Pliers	52-22598	\$29.99





3 Hole 5/16" x 1-3/4"

## ALUMINUM SPOKES WITH SMOOTH & BUMP GRIP

- These wheels have a high grip polyurethane coating.

DESCRIPTION	PART #	PRICE
15" Black – Smooth Grip – Dished (2.75")	52-56801	\$59.99
15" Blue – Smooth Grip – Dished (2.75")	52-56803	\$59.99
15" Red – Smooth Grip – Dished (2.75")	52-56805	\$59.99
17" Black – Smooth Grip – Dished (2.75")	52-56811	\$59.99
15" Black – Bump Grip – Dished (2.75")	52-56820	\$69.99
17" Black – Bump Grip – Dished (2.75")	52-56825	\$69.99



## ALUMINUM WHEEL "FAT" GRIP

- Thicker rim for a better grip and less wrist and arm strain.
- Ideal size for long races.
- 15" Dished aluminum wheel.

DESCRIPTION	PART #	PRICE
15" Black – Smooth Grip – Dished (2.75")	52-56809	\$69.99



## SUEDE WRAPPED STEERING WHEEL

- Sports car and open wheel road race.
- Better grip and cushioning for improved steering control and comfort, ergonomic molded grips on rim.
- Premium quality hand sewn with CNC machined aluminum center.

DESCRIPTION	PART #	PRICE
290 mm flat – 3 hole (5 mm x 44.0 mm circle)	52-56911	\$159.99
320 mm flat – 3 hole (5 mm x 44.0 mm circle)	52-56913	\$159.99
290 mm flat – blank	52-56906	\$159.99
320 mm flat – blank	52-56908	\$159.99



## STEEL WHEELS

- Where steel wheels are required.
- Smooth Grip-Dished 2.75".

DESCRIPTION	PART #	PRICE
15" Steel Wheel - Black Smooth Grip	52-56841	\$49.99
17" Steel Wheel - Black Smooth Grip	52-56851	\$49.99

## PRO ALUMINUM STEERING WHEELS WITH SUEDE WRAPPED RIM

- Suede gives you an excellent grip for better car control plus reduced wrist and arm strain during the race.
- Lightweight 2.3 lbs.
- Can be easily cleaned.
- 15" with 2.5" dish.
- Std. 3 bolt mounting (5/16" x 1-3/4".)
- Center has CNC machined beveled edges.
- Red stripe on the rim at the top indicating 'straight ahead'.



DESCRIPTION	PART #	PRICE
Suede Dished Steering Wheel - 15" Black Center	52-56797	\$159.99
Suede Dished Steering Wheel - 15" Natural Center	52-56800	\$149.99

## ULTRA LIGHTWEIGHT ALUMINUM STEERING WHEELS DRILLED OR UNDRILLED

- These drilled wheels are half the weight of other brands.
- Drilled on 2 sides for additional weight savings.
- Shot peened rim for good grip.
- Holes give even better grip.

DRILLED	PART #	PRICE
15" Uncoated Black – Dished (2.5")	52-56838	\$89.99
15" Uncoated Aluminum – Dished (2.5")	52-56837	\$89.99
15" Uncoated Black – Flat	52-56867	\$89.99
15" Uncoated Aluminum – Flat	52-56866	\$89.99
14" Uncoated Black – Dished (2.5")	52-56833	\$89.99
14" Uncoated Aluminum – Dished (2.5")	52-56835	\$79.99

UNDRILLED	PART #	PRICE
15" Uncoated Aluminum – Smooth – Dished (2.5")	52-56836	\$59.99
15" Uncoated Aluminum with Bumps – Dished (2.5")	52-56822	\$69.99
14" Uncoated Aluminum – Smooth – Dished (2.5")	52-56834	\$59.99



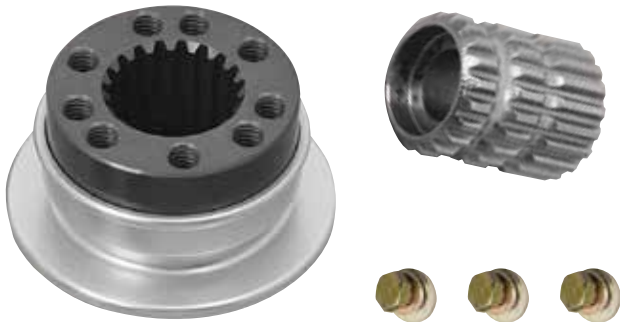


All hubs and spuds include a second safety groove for your protection.

## STEERING WHEEL QUICK DISCONNECT SPLINED

Any play in the steering, including the hub, takes away control from the driver, letting the car 'wander around'. This Pro hub has a precision machined 4130 spud and a T6 Hard Anodized splined hub for a super tight fit, yet is easy to remove and install. Plus, there are multiple sets of mounting holes so you can 'clock' your wheel 3 times closer. For safety, there are 2 sets of retaining grooves. If you don't get the ring engaged, it will catch on the second safety groove rather than come off on the track. The steel spuds can be installed on either 3/4" or 5/8" shafts. Splined hub – pull ring release with double safety grooves on weld-on SAE 4130 spud.

DESCRIPTION	PART #	PRICE
Precision Fit Splined Hub	52-56605	\$79.99
Precision Fit Splined Hub SFI™ Approved	52-56609	\$109.99



## STEERING WHEEL DISCONNECT SPRINT CAR

- Precision Splined aluminum hub. Pull ring release with double safety grooves.
- Tapered spud for many sprint car steering boxes.
- 3 Mounting holes – 5/16" on a 1-3/4" bolt circle (hole distance 1-1/2" center-to-center).

DESCRIPTION	PART #	PRICE
Sprint Car Splined Hub Quick Disconnect	52-56603	\$109.99



3 Hole 5/16" x 1-3/4"

## STEERING WHEEL QUICK DISCONNECTS HEX PUSH BUTTON

- Hex type.
- Aluminum hub.
- Weld to 3/4" or 5/8" (karts) steering shafts.
- Double safety grooves.

DESCRIPTION	PART #	PRICE
Hex Hub – Push Button Release	52-56600	\$39.99



## STEERING WHEEL HOOK

- Hang your wheel out of the way.
- Bolts on – no welding.

DESCRIPTION	PART #	PRICE
1-3/4" Roll Bar Size	52-22576	\$19.99
1-1/2" Roll Bar Size	52-22577	\$19.99



## STEERING WHEEL NOSE PAD

- Required by most rules.
- Medium density.
- Product is 6 inches in diameter.

DESCRIPTION	PART #	PRICE
Nose Pad	52-56899	\$19.99

## GPS TRIGGERED IN-CAR TIMER

- This in-car timing system lets the driver see their lap times as they happen. Try different lines around the track to instantly find the fastest way. The GPS replaces the IR beam.
- Track mapping: divide the track into timed segments and see where you are fast and where you are losing time.
- Recall segment times in pits and compare laps.
- 3" Backlit graphic display.



GPS sensor mounts in car.



**HOT LAP™ GPS™**

DESCRIPTION	PART #	PRICE
Hot Lap™ GPS Triggered In-Car Timer	52-21730	\$319.99

## STOPWATCHES

### LONGACRE® & ROBIC™

#### Longacre®

- Lap counter.
- 30 Lap memory.
- Crisp one-button action.
- Comes with Silver case.

#### Robic™ SC 606W

- Clocks every lap.
- Computes average MPH.
- Counts laps to 999.
- 50 Lap memory.

#### Robic™ SC 505W

- Time every lap plus automatic lap count.
- 12 Memory recall.
- One button action for simple timing.



DESCRIPTION	PART #	PRICE
Longacre® Memory Stopwatch w/ Case	52-22164	\$39.99
Longacre® Memory Stopwatch	52-22162	\$29.99
Robic™ SC 606W Stopwatch	52-22172	\$49.99
Robic™ SC 505W Stopwatch	52-22168	\$39.99

## STOPWATCH CLIPBOARDS

- Lightweight aluminum won't break like plastic can.
- Powder coat finish with edge protectors.
- Professional color lap charts included with practice times on back.
- Rubber feet prevent sliding and protect car's finish.

DESCRIPTION	PART #	PRICE
2 Car Stopwatch Clipboard w/ Robic™ SC 505W	52-22324	\$119.99
1 Car Stopwatch Clipboard w/ Robic™ SC 606W	52-22319	\$89.99
2 Car Stopwatch Clipboard w/ Robic™ SC 606W	52-22321	\$129.99
Clipboard Only	52-22314	\$39.99

#### 2 Watch Economy Clipboard With Robic™ SC 505W Watches

Times every lap, counts laps, and has 5 lap memory.

#### Clipboards With Robic™ SC 606W Watches

These watches clock every lap, show average MPH, and have a 50 lap dual memory.



## LAP TIMES/ CHASSIS SHEETS

- Lap times - practice times on back.
- Chassis setup sheets - tire temps on back.
- Punched for 3 ring binder.
- 2 Sided – Get added use.



DESCRIPTION	PART #	PRICE
Chassis Setup – 1 Pad/50 Sheets	52-22528	\$14.99

## PADDED STORAGE POUCH

- Black vinyl outside, foam padding inside.
- Keeps clipboard and stopwatches clean and safe.



DESCRIPTION	PART #	PRICE
Padded Storage Pouch	52-22390	\$24.99



## SFIT™ EMBOSSED ROLL BAR PADDING

### 3' BLACK

- Provides maximum in energy absorption and flame retardation and will not drip or melt in a fire.
- Required in NHRA®, SCCA®, and recommended in NASCAR®.
- Meets new SFIT™ spec 45.1.
- Pre-taped for easy installation.
- Fits bars 1-1/2" to 1-3/4" x 36" length.

DESCRIPTION	PART #	PRICE
SFIT™ Embossed Roll Bar Padding 3' Black	52-65169	\$24.99



## HIGH DENSITY ROLL BAR PADDING

### REGULAR & "MINI" SIZE

- Provides maximum in energy absorption and flame retardation.
- Will not drip or melt in fire.
- Fits bars for 1-1/2" to 1-3/4".
- Self-adhesive (pre-taped) for a quick and clean installation.
- "Mini" padding has a streamlined shape to focus padding where you need it, improve sightlines and reduce blind spots.



"MINI" PADDING



REGULAR SIZE

All Longacre® HD padding is "pre taped" with adhesive to make installation easier.

DESCRIPTION	PART #	PRICE
Black - High Density Roll Bar Padding – 3'	52-65162	\$19.99
Blue - High Density Roll Bar Padding – 3'	52-65164	\$19.99
Red - High Density Roll Bar Padding – 3'	52-65166	\$19.99
Black - HD Mini Roll Bar Padding – 3'	52-65182	\$14.99
Blue - HD Mini Roll Bar Padding – 3'	52-65183	\$14.99
Red - HD Mini Roll Bar Padding – 3'	52-65184	\$14.99





## ROLL BAR PADDING PROTECTO 180™ MEDIUM DENSITY

- New 180° Design: don't pad the back of your roll bars.
- Easier to install - use wire ties or tape.
- For 1-3/8" to 1-3/4" bars.
- 1-1/8" Thick at top x 36".



DESCRIPTION	PART #	PRICE
Black ProTecto 180™ Medium Density Roll Bar Padding	52-65692	\$4.99

## ROLL BAR PADDING KITS BLACK TAPED

All the padding needed to do most cars in a convenient package. You get a combination of high density full size padding for around your head. Mini HD padding for posts where line-of-sight is important, and new ProTecto 180™ for arm and leg protection.

### Kit includes:

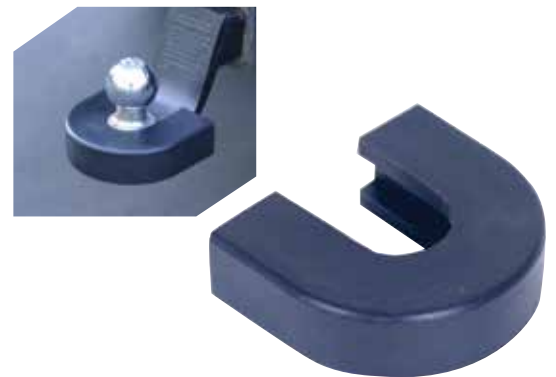
- 2) Full size high density pad.
- 2) Mini high density.
- 4) New ProTecto 180™.



DESCRIPTION	PART #	PRICE
Roll Bar Padding Kit - Black Taped	52-65135	\$59.99

## TRAILER HITCH PAD

- Uses material similar to our high density roll bar padding for good protection.
- Easy to install without removing the ball - takes less than 1 minute.
- Doesn't interfere with normal trailer use.
- Fits most hitches with no modification (many others with only slight modification.)
- Held on with wire ties (included.)



DESCRIPTION	PART #	PRICE
Trailer Hitch Pad	52-65885	\$4.99

## DOOR BAR PADDING MAT

- Protect your left elbow, arm, hand, and wrist.
- Made from fire resistant padding similar to our high density roll bar padding but slightly softer.
- Saves you tons of time, no need to cut and fit several separate pieces.
- Mounts quickly with adjustable molded-in straps.
- Sharp-looking with a clean appearance.
- Size: 39-1/2" x 16-1/2" x 1" thick.



DESCRIPTION	PART #	PRICE
Door Bar Padding Mat	52-65130	\$99.99



## COMPACT RADIO BOX

- For the latest small radios.
- 2 Velcro straps hold the radio securely in place.
- Internal padding prevents damage.
- 3 Sided for easy access.
- Adjustable brackets mount to your roll-bar at multiple angles - Easier to install!
- Available for 1-3/4" or 1-1/2" bar.

DESCRIPTION	PART #	PRICE
1-3/4" Compact Radio Box	52-22560	\$44.99
1-1/2" Compact Radio Box	52-22562	\$44.99

## DRINK HOLDER



- Large capacity insulated bottle with tube.
- Includes "bite valve" to avoid leaks from tube.
- Bolts onto your roll bar - no welding required.
- Powder coated with anodized bracket.

DESCRIPTION	PART #	PRICE
1-3/4" Drink Holder	52-22551	\$69.99
1-1/2" Drink Holder	52-22553	\$69.99
Drink Bottle and Hose Only	52-22556	\$24.99
Drink Bottle Replacement Hose Only	52-22552	\$4.99

**ADJUSTABLE BRACKETS MOUNT AT MULTIPLE ANGLES, EASIER TO INSTALL, & NO WELDING!**



## UNIVERSAL SWITCH PANEL BRACKET

- Mount your switch panel quickly and easily.
- Lightweight aluminum.
- Includes 2 brackets.

DESCRIPTION	PART #	PRICE
1-3/4" Switch Panel Bracket	52-22783	\$49.99
1-1/2" Switch Panel Bracket	52-22787	\$49.99



## HELMET HOOK

- Protect your helmet.
- Bolts onto roll bar - no welding.
- Lightweight billet aluminum - black anodized.

DESCRIPTION	PART #	PRICE
1-3/4" Helmet Hook	52-22570	\$19.99
1-1/2" Helmet Hook	52-22572	\$19.99



## UNIVERSAL BRACKET

- Mount mirror, switch panel, etc.
- Lightweight aluminum.
- Bolts onto your roll bar.

DESCRIPTION	PART #	PRICE
1-3/4" Short Universal Bracket	52-22755	\$19.99
1-1/2" Short Universal Bracket	52-22757	\$19.99

## WIDE ANGLE MIRROR KITS

- You can quickly and easily add a wide angle racing mirror to your race car with one of our mirror kits.
- These mirrors come with bolt on brackets made of anodized black billet aluminum.
- Longacre® rear view mirrors fasten onto your roll cage in seconds and won't vibrate loose.
- Mirror brackets available in two lengths of adjustment to fit 1-1/2" or 1-3/4" roll bars.



Short Brackets: 1/2" to 2-1/2" Range  
Long Brackets: 2" to 5-1/2" Range

DESCRIPTION	PART #	PRICE
14" Wide Angle Mirror Kit - Short Brackets - 1-1/2"	52-22535	\$62.99
14" Wide Angle Mirror Kit - Long Brackets - 1-1/2"	52-22537	\$62.99
14" Wide Angle Mirror Kit - Short Brackets - 1-3/4"	52-22534	\$62.99
14" Wide Angle Mirror Kit - Long Brackets - 1-3/4"	52-22536	\$62.99
17" Wide Angle Mirror Kit - Short Brackets - 1-1/2"	52-22531	\$72.99
17" Wide Angle Mirror Kit - Long Brackets - 1-1/2"	52-22533	\$72.99
17" Wide Angle Mirror Kit - Short Brackets - 1-3/4"	52-22530	\$72.99
17" Wide Angle Mirror Kit - Long Brackets - 1-3/4"	52-22532	\$72.99
14" Wide Angle Replacement Mirrors	52-22544	\$29.99
17" Wide Angle Replacement Mirrors	52-22547	\$37.99

## SPOT MIRRORS

### CLAMP ON

- 3-3/4" Spot Mirror with bracket for 1-3/4" or 1-1/2" roll bar.
- Adjusts easily.
- Mounts on driver's side or passenger's side.
- Bolts in place solidly.

DESCRIPTION	PART #	PRICE
Spot Mirror 1-3/4"	52-22548	\$49.99
Spot Mirror 1-1/2"	52-22549	\$49.99
Replacement Spot Mirror 3-3/4"	52-22550	\$26.99



## BRACKETS ONLY



- Brackets for Longacre® wide angle racing mirrors.
- No welding - bolts to your roll bars.
- Brackets adjust from 2" to 5-1/2".
- Brackets CNC machined from billet aluminum.
- Includes 2 brackets.

DESCRIPTION	PART #	PRICE
Mirror Bracket Pair - Short - 1-3/4"	52-22538	\$42.99
Mirror Bracket Pair - Short - 1-1/2"	52-22539	\$42.99
Mirror Bracket Pair - Long - 1-3/4"	52-22540	\$44.99
Mirror Bracket Pair - Long - 1-1/2"	52-22541	\$42.99

## BILLET REAR END BREATHER KIT

- Includes vent, hardware, and hose for a complete installation.
- Clamp on design - no welding required.
- 1/4" NPT.
- Available with bracket for either 1-3/4" or 1-1/2" roll bars.

DESCRIPTION	PART #	PRICE
Billet Rear End Breather Kit 1-3/4"	52-22568	\$49.99
Billet Rear End Breather Kit 1-1/2"	52-22569	\$49.99
Billet Rear End Breather 1-3/4"	52-22564	\$39.99
Billet Rear End Breather 1-1/2"	52-22566	\$39.99





## COMPLETE BRAKE LINE KIT

Includes 4 SS braided lines to go from the chassis to the wheels, an assortment of pre-flared bendable steel chassis lines, fittings, connectors, frame tabs, Adel™ clamps, and wire ties. (Order caliper fittings separately.)

DESCRIPTION	PART #	PRICE
Complete Brake Line Kit - #3 AN	52-45215	\$159.99
Complete Brake Line Kit - #4 AN	52-45216	\$159.99

Note: Not for street driven cars minimum bending radius 2".



## STEEL BRAIDED BRAKE LINES

Stainless steel braided teflon line with permanently swaged fittings. 2500 psi working pressure. #4 AN fittings on both ends.

DESCRIPTION	PART #	PRICE
Brake Line - 22" #4 AN	52-45150	\$19.99
Brake Line - 22" #3 AN	52-45153	\$19.99
Brake Line - 24" #4 AN	52-45160	\$19.99
Brake Line - 24" #3 AN	52-45163	\$19.99



## CALIPER FITTING

- 1/8" NPT, #3, or #4 AN.
- Fits most popular models.

DESCRIPTION	PART #	PRICE
1/8" NPT to #4 AN Straight	52-45240	\$4.99
1/8" NPT to #4 AN 90°	52-45230	\$5.99
1/8" NPT x #3 AN Straight	52-45243	\$4.99
1/8" NPT x #3 AN 90°	52-45233	\$5.99



## LONG LEG CALIPER FITTING

- 1/8" NPT 90° with #4 and long leg for extra clearance.
- 7/16"-20 #4 AN 90° (Fits GM single piston.)

DESCRIPTION	PART #	PRICE
1/8" NPT x #4 AN 90°	52-45220	\$6.99
7/16"-20 x #4 AN 90°	52-45250	\$4.99



## BRAKE FLUID BLEED BOTTLE

- Back of bottle has a magnet to hold it in place.
- Split hose - connect to one or two bleeders at once.

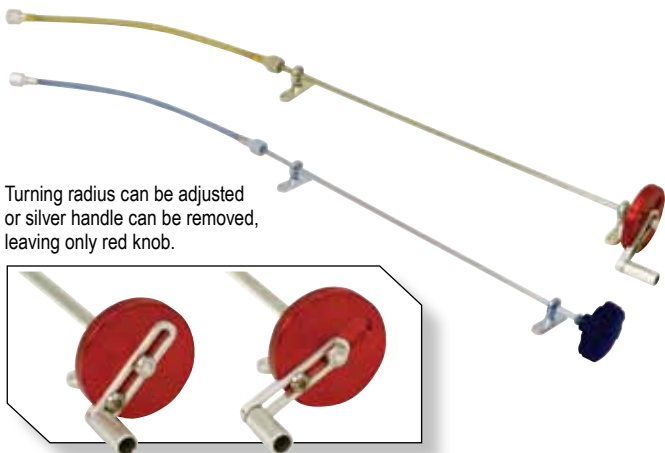
DESCRIPTION	PART #	PRICE
Brake Fluid Bleed Bottle Kit	52-45200	\$34.99
Single Brake Fluid Bleed Bottle	52-45202	\$24.99



## BRAKE LINE FRAME TAB & FITTINGS

- #3 or 4 AN x 3/16" brake line, "bulkhead" style, with jam nut for easy mounting.

DESCRIPTION	PART #	PRICE
#3 AN Brake Line Frame Fitting	52-45263	\$10.99
#4 Brake Line Frame Fitting	52-45273	\$10.99
#3 Brake Line Frame Fitting w/ Tab & Nut	52-45286	\$14.99
#4 Brake Line Frame Fitting w/ Tab & Nut	52-45288	\$14.99
Frame Tab Pack of 4	52-45284	\$14.99
Frame Tab Pack of 10	52-45285	\$29.99



Turning radius can be adjusted or silver handle can be removed, leaving only red knob.

## BRAKE BALANCE ADJUSTERS DELUXE & BASIC

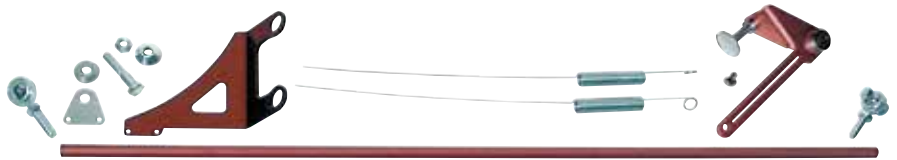
- Frictionless polymer bearing mount for easy, no-bind adjustments.
- Detents every 90° make precise adjustments easier. "Click" the exact change you want.
- HD braided flex connector: shorter virtually no 'wrap up'.
- 3/8"-24 or 7/16"-20 connector to your bias bar. (Check before ordering.)

DESCRIPTION	PART #	PRICE
Billet Aluminum Brake Balance Adjuster - 3/8" - 24	52-44108	\$149.99
Billet Aluminum Brake Balance Adjuster - 7/16" - 20	52-44109	\$149.99
Basic Brake Balance Adjuster - 3/8" - 24	52-44107	\$99.99

## CARB LINKAGE KITS

### STANDARD • EXTENDED • DELUXE

- Includes 2 all metal rod ends, aircraft aluminum tube, Holley® carb bushing, 2 return springs, bolts, and nuts.
- Just bend to clear air cleaner, cut to length, and thread one end (requires 1/4"-28 tap.)
- Easily forms to any car or use straight.
- 6061 T6 Heat treated aluminum alloy is tough to bend but stays to shape in use. Won't straighten out and cut throttle travel, costing you precious horsepower.
- Throttle rod length 23-1/4".
- Only fits small block Chevy.



DESCRIPTION	PART #	PRICE
Standard Carb Linkage Kit	52-32700	\$39.99
Extended Carb Linkage Kit	52-32702	\$39.99
Deluxe Carb Linkage Kit - Short	52-32720	\$79.99

## ALUMINUM AIR CLEANER STUD KIT

- Includes aluminum stud and thumb knob, air cleaner lid mounting stop, and jam nut.
- Mounting stop and jam nut go under air cleaner lid so you can tighten the thumb knob without distorting the lid.
- Set screw in thumb knob keeps it from coming loose.
- Built-in rubber seal keeps dust out of your engine.
- Top thread 5/16", bottom carb thread 1/4", or 5/16".



DESCRIPTION	PART #	PRICE
Aluminum Air Cleaner Stud Kit - 5/16" Carb Thread - Holley®	52-32750	\$39.99
Aluminum Air Cleaner Stud Kit - 1/4" Carb Thread	52-32752	\$39.99
Replacement Thumb Knob for Air Cleaner Stud Kit	52-32754	\$14.99

## QUICK CHECK BRAKE PRESSURE GAUGE SET

- Check brake pressures at the caliper.
- Set front-to-rear bias for best braking performance.
- Temporarily installs in bleeder valve.



DESCRIPTION	PART #	PRICE
Quick Check Brake Pressure Gauge Set 1/4" - 28	52-44145	\$84.99
Quick Check Brake Pressure Gauge Set GM Metric 10mm	52-44147	\$89.99
Quick Check Brake Pressure Gauge Set 3/4" - 24	52-44149	\$89.99

## THROTTLE STOP BRACKET

- Helps prevent broken throttle arms with a positive stop.
- Lightweight aluminum - won't change in use.



DESCRIPTION	PART #	PRICE
Primary Throttle Stop Bracket - Holley® 4 BBL	52-32730	\$39.99
Primary Throttle Stop Bracket - Holley® 2 BBL	52-32732	\$39.99

## CARB BUSHINGS

- Split bushing for Holley® carbs.



DESCRIPTION	PART #	PRICE
Replacement Carb Bushings - Aluminum	52-32707	\$5.99

## THROTTLE RETURN KITS

- Lightweight aluminum bracket, 2 springs, Holley® carb bushing, and miscellaneous hardware.
- Only fits small block Chevy.



DESCRIPTION	PART #	PRICE
Throttle Return Kit - Short	52-32710	\$24.99
Replacement Throttle Return Springs (Pack of 2)	52-32500	\$6.99



## BILLET REMOTE STARTER BUTTON

- Crank your motor over from the engine compartment.
- Cool billet aluminum.

DESCRIPTION	PART #	PRICE
Billet Remote Starter Button	52-45795	\$39.99



## SPARK PLUG VIEWER

- Get your jetting right for maximum power.
- Batteries included.
- 10X Magnification.
- Includes spark plug holder: 52-50886.

DESCRIPTION	PART #	PRICE
Spark Plug Viewer with Holder	52-50886	\$39.99
Spark Plug Viewer	52-50884	\$29.99
Spark Plug Holder	52-50885	\$14.99



## ENGINE COMPRESSION TESTER

- 14 mm Plug adapter.
- Check for bent or leaking valves, bad ring seal, even leaking head gaskets.

DESCRIPTION	PART #	PRICE
Engine Compression Tester	52-73025	\$39.99



## BRAIDED TEFLON FUEL LINE

- Smooth bore #8 AN 1/2" teflon fuel line won't collapse at high fuel draw.
- Ends installed and ready-to-use.
- 144" Length for 102" to 114" wheelbase cars.

DESCRIPTION	PART #	PRICE
Braided Teflon Fuel Line	52-33900	\$119.99



## MAGNETIC DRAIN PLUG

- Traps ferrous particles and keeps them from damaging your equipment.
- Check often to spot developing problems.

DESCRIPTION	PART #	PRICE
Drain Plug - 1/2"-20	52-33300	\$9.99
Drain Plug - 3/8" Npt	52-33320	\$6.99



## HOOD PIN KITS

- Includes pins, jam nuts, scuff plates, and flip style safety pins.

DESCRIPTION	PART #	PRICE
Aluminum Kit - 1/2"-20 Set of 2	52-23500	\$14.99
Aluminum Kit - 1/2"-20 Set of 6	52-23502	\$29.99
Aluminum Kit - 3/8"-24 Set of 2	52-23510	\$14.99
Steel Kit - 3/8"-24 Set of 2	52-23600	\$14.99
2 Replacement Torsion Clips	52-23550	\$4.99



## HYDRAULIC CLUTCH LINE KIT

- SS braided line quickly and easily connects the clutch master cylinder to the slave cylinder.
- Comes complete with fittings for most applications.
- 36" For suspended pedals.

DESCRIPTION	PART #	PRICE
Hydraulic Clutch Line Kit	52-28050	\$39.99



## UNIVERSAL AIR TOOL QUICK DISCONNECT

- Connects to all 3 commonly used fittings.
- No more switching fittings to use that new or borrowed tool.
- Female only (Sold in pairs).

DESCRIPTION	PART #	PRICE
Universal Air Tool Quick Dis.	52-36013	\$9.99



## HEADER BOLTS CHEVY SMALL BLOCK

- Compact 12 point head – use a 3/8" box wrench to tighten around big tubes.
- Grade 9 alloy steel.
- 170,000 psi.

DESCRIPTION	PART #	PRICE
Header Bolts	52-35600	\$14.99

## SPOILER & SPLITTER SUPPORTS

- Lightweight T6 aluminum tube with R & L threads.
- Can also be used for windshield supports.
- 6", 8", and 10" in black anodized tubes.
- Includes both flat top and button head mounting screws.
- Splitter supports have high strength steel pivot ends to help prevent breakage.
- Ultra Lightweight Aluminum: CNC machined billet aluminum, black anodized.
- Ultra Lightweight Aluminum: high strength, lightweight tapered tube.
- Ultra Lightweight Aluminum: Bolts on easily and uses specially built aluminum heim joints to adjust for any angle.

DESCRIPTION	PART #	PRICE
Aluminum Support Rod 6"	52-23756	\$24.99
Aluminum Support Rod 8"	52-23758	\$24.99
Aluminum Support Rod 10"	52-23760	\$29.99
Aluminum Splitter Support Rod 6"	52-23776	\$39.99
Aluminum Splitter Support Rod 8"	52-23778	\$39.99
Aluminum Splitter Support Rod 10"	52-23780	\$39.99
Aluminum Spoiler Support 6"	52-23706	\$29.99
Aluminum Spoiler Support 8"	52-23708	\$29.99
Aluminum Spoiler Support 10"	52-23710	\$29.99



Length shown is the rod. Heim joints add 1" overall, pivot center-to-center. Adjustment is +1.5" beyond this. 6" support will be center-to-center min 7", max 8.5".

## FENDER SUPPORT KIT

- Two flexible supports made from lightweight break resistant polymer material.
- Springs back to shape if bent.
- Includes all hardware for a quick and professional installation.
- Lightweight aluminum mounts.

DESCRIPTION	PART #	PRICE
Fender Support Kit	52-23720	\$39.99
Adjustable Fender Support Kit	52-23740	\$49.99
Replacement Fender Support Rods - 1 Pair	52-23744	\$19.99



Adjustable style fender support bracket comes with 52-23740.

## LONGACRE® RADIATOR CAPS



DESCRIPTION	PART #	PRICE
Radiator Cap 22 - 24 psi	52-75260	\$14.99
Radiator Cap 29 - 31 psi	52-75265	\$19.99

## BACKING DISK FOR SPOILER SUPPORT



Use to support Lexan® spoiler or use to fasten spoiler to deck lid.

DESCRIPTION	PART #	PRICE
Backing Disk for Spoiler	52-23702	\$14.99

## SHIFTER STICK

- CNC machined billet aluminum.
- Lightweight yet strong.
- To replace heavier steel original.
- Slotted bottom hole to install easier.

DESCRIPTION	PART #	PRICE
Shifter Stick 3"	52-22613	\$69.99



## SHIFTER BOOT

- With quick access mounting plate.
- High temperature liner seals out the heat.
- Removes fast for quick transmission changes.
- Fire and grease resistant material.



DESCRIPTION	PART #	PRICE
Shifter Boot	52-22615	\$109.99

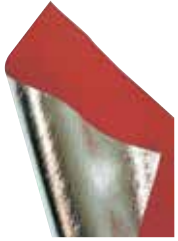
## BILLET ALUMINUM SHIFTER BALLS



- New design better heat insulation.
- 2" Ball: Extra holes are drilled and mounted with a stainless steel bolt (SS transfers heat poorly) or on shifter arm stud.
- No insert to come out - ball won't come off in your hand during the race.
- One piece CNC machined billet aluminum.

DESCRIPTION	PART #	PRICE
Shifter Ball 3/8"-16 Thread 2"	52-22601	\$39.99
Shifter Ball 3/8"-16 Thread 1-5/8"	52-22607	\$29.99

## ALUMINIZED INSULATION CLOTH



- Easy to work with - just cut shape with scissors.
- Good insulation for firewall, floor, and tunnel.
- Max ambient temp: 600°F.
- Aluminized on one side to reflect heat, silicone coated on the other.

DESCRIPTION	PART #	PRICE
Aluminized Insulation Cloth 58" x 24"	52-64150	\$79.99

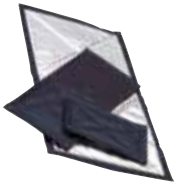
## FIREBRAID™ INSULATION SLEEVING



- High temp, flexible insulating sleeving.
- Maximum Temperature: 500°F.
- Silicon coated fiberglass braid keeps headers from burning wires.
- Plug wires, battery cables, insulates fuel and oil lines, and will not burn.

DESCRIPTION	PART #	PRICE
Insulation Sleeving - 5/16 in - 36 in	52-49500	\$14.99
Insulation Sleeving - 5/16 in - 10 ft	52-49520	\$39.99
Insulation Sleeving - 3/8 in - 36 in	52-49600	\$19.99
Insulation Sleeving - 3/8 in - 10 ft	52-49620	\$49.99
Insulation Sleeving - 9/16 in - 36 in	52-49700	\$19.99
Insulation Sleeving - 9/16 in - 10 ft	52-49720	\$49.99
Insulation Sleeving - 11/16 in - 36 in	52-49750	\$24.99
Insulation Sleeving - 11/16 in - 10 ft	52-49770	\$59.99
Insulation Sleeving - 13/16 in - 36 in	52-49800	\$24.99
Insulation Sleeving - 13/16 in - 10 ft	52-49820	\$69.99
Insulation Sleeving - 15/16 in - 36 in	52-49850	\$29.99
Insulation Sleeving - 15/16 in - 10 ft	52-49870	\$69.99
Insulation Sleeving - 1-1/8 in - 36 in	52-49900	\$29.99
Insulation Sleeving - 1-1/8 in - 10 ft	52-49920	\$79.99

## INSULATING FLOOR MATS



- Specially designed for use in driver's compartment.
- Made from fireproof non-asbestos heavy weight cloth.
- Silicon coated on one side and aluminized for heat reflection on the other side.
- Maximum temp: 600°F.
- In the middle is a heavy duty high temp insulation material.
- Eyelets in the corners to mount with rivets or screws.

DESCRIPTION	PART #	PRICE
Floor Mat - 24" x 18"	52-64320	\$59.99
Floor Mat - 18" x 18"	52-64360	\$59.99
Floor Mat - 24" x 10"	52-64400	\$49.99
Floor Mat - 12" x 8"	52-64420	\$29.99

## HEADER INSULATION 'TAPE'



- Contains exhaust heat for better velocity, scavenging, more power, and cooler under hood temperatures.
- 2" x 1/16".
- 100' Roll will do for most V8 headers.
- Maximum temp: 1,250°F.

DESCRIPTION	PART #	PRICE
100' Header Insulation 'Tape'	52-64850	\$69.99
50' Header Insulation 'Tape'	52-64870	\$39.99
25' Header Insulation 'Tape'	52-64880	\$24.99
10' x 2" x 1/32" White Insulation 'Tape'	52-64835	\$14.99
50' x 2" 1/32" Insulation 'Tape'	52-64830	\$39.99

## STAINLESS STEEL TIES FOR HEADER TAPE, ETC.



- Holds header insulation in place.
- Use as a super strong wire tie.
- Stays tight.
- Heat resistant.
- Maximum temp: 1,250°F.

DESCRIPTION	PART #	PRICE
Header Wrap Locking Ties 8", 8-Ties	52-47840	\$14.99
Header Wrap Locking Ties 8", 12-Ties	52-47843	\$19.99
Header Wrap Locking Ties 8", 24-Ties	52-47846	\$39.99
Header Wrap Locking Ties 14", 4-Ties	52-47842	\$14.99
Header Wrap Locking Ties 14", 12-Ties	52-47845	\$29.99
Header Wrap Locking Ties 14", 24-Ties	52-47848	\$59.99

## LEXAN™ CLEANER AND POLISH



- #1 Cleaner removes dirt and leaves a glaze that cuts static and repels dust.
- #2 Polish to remove fine scratches and haze – works great for polishing car paint, removing oxide and scuffs.
- #3 Polish for deeper scratches.

DESCRIPTION	PART #	PRICE
Lexan™ #1 Cleaner	52-63500	\$9.99
Lexan™ #2 Polish	52-63600	\$9.99
Lexan™ #3 Polish	52-63700	\$14.99

## APPAREL



DESCRIPTION	PART #	PRICE
Longacre® Black Twill Hat	52-11655	\$19.99
Longacre® Pit Gear Bag	52-11911	\$39.99
Longacre® Pit Gloves	52-11208	\$24.99



# CAR COVERS

## PAVEMENT • DIRT LM • OPEN WHEEL MOD

### Pavement Late Model & Open Wheel Modified

- Heat reflective silver color.
- Soft liner won't scratch paint.
- Moisture resistant.
- Zippered window to get in and out.
- Will fit most Late Model cars: All Pro, ASA, and SW Series, etc.
- Eyelets along bottom to secure cover from tampering.

### Dirt Late Model

- Custom designed for Dirt Late Model race cars.
- Hood zipper allows engine work without removing cover.



DESCRIPTION	PART #	PRICE
Pavement Late Model Car Cover	52-11150	\$189.99
Dirt Late Model Car Cover	52-11152	\$229.99
Dirt Late Model Rear Car Cover	52-11153	\$99.99
Open Wheel Modified Car Cover	52-11154	\$199.99
Cockpit Car Cover	52-11156	\$89.99

## COCKPIT CAR COVER

- Keeps windows & cockpit free of rain & dust.
- Eyelets along bottom to secure cover.
- Storage bag included.
- Soft liner won't scratch windows or paint.



## KEEP EVERYTHING IN ORDER AT THE TRACK OR AROUND THE SHOP WITH OUR STURDY CASES.

Sizes are approximate and are subject to minor changes.



- Matches all our other Silver cases.
- Store parts neatly, not rolling around in your tool box.
- Radios, rivets, drills, stopwatches, tire gauges, durometers, etc.



DESCRIPTION	PART #	PRICE
Storage Box For 15" Low Profile Pads	52-72292	\$209.99
Lined Hard Case 16-3/4" x 13-1/2" x 4"	52-50522	\$69.99
Lined Hard Case 14-3/8" x 11" x 3-1/2"	52-50515	\$59.99
Lined Hard Case 9-1/2" x 7" x 1-3/4"	52-50518	\$19.99
Lined Hard Case 10" x 6" x 3-1/8"	52-50514	\$24.99
Lined Hard Case 8-1/4" x 4-1/8" x 3-1/8"	52-50512	\$19.99
Lined Hard Case 9-1/4" x 3" x 1 1/2"	52-50516	\$24.99
Lined Hard Case 6-5/8" x 2-1/4" x 1-1/2"	52-50513	\$19.99
Lined Hard Case 4-1/8" x 2-5/8" x 1"	52-50511	\$14.99
Bump Steer Gauge Storage Case 22-1/2" x 20-1/2" x 4"	52-79019	\$79.99
Storage Box for 12" Scale Pads	52-72280	\$189.99
Lined Hard Case 4-1/4" x 3" x 1-7/8"	52-50520	\$19.99
Lined Hard Case 2-3/4" x 2-1/8" x 1"	52-50517	\$9.99

# AFCO

▶ AT SERIES T-SHIRT **\$14<sup>99</sup>**  
89108



▶ AFCO T-SHIRT **\$14<sup>99</sup>**  
89116



▶ AFCO T-SHIRT **\$14<sup>99</sup>**  
89117



▶ AT SERIES HOODIE **\$29<sup>99</sup>**  
89115



▶ AFCO BANNER *LIT-215* **\$19<sup>99</sup>**



▶ AFCO T-SHIRT **\$14<sup>99</sup>**  
89100



▶ AFCO T-SHIRT **\$14<sup>99</sup>**  
89099



# DYNATECH®

▶ DYNATECH T-SHIRT **\$14<sup>99</sup>**  
89118



▶ DYNATECH HOODIE **\$29<sup>99</sup>**  
89090



▶ STRETCH **\$24<sup>99</sup>**  
FIT HAT  
89045



▶ 8' x 3' BANNER **\$21<sup>99</sup>**  
BANNER



▶ DYNATECH **\$2<sup>99</sup>**  
COOLIE  
89098



▶ AFCO WORK SHIRT **\$34<sup>99</sup>**  
89086



▶ AFCO WORK JACKET **\$69<sup>99</sup>**  
89095



# LONGACRE®

▶ BLACK TWILL **\$19<sup>99</sup>**  
HAT  
52-11655



▶ LONGACRE® PIT **\$39<sup>99</sup>**  
GEAR BAG  
52-11911



▶ LONGACRE® PIT **\$24<sup>99</sup>**  
GLOVES  
52-11208



# UltimateOM.com

▶ QUARTER MIDGET T-SHIRT **\$14<sup>99</sup>**  
89119



# AFCO

PERFORMANCE GROUP

Visit [www.AFCOPERFORMANCEGROUP.com](http://www.AFCOPERFORMANCEGROUP.com) to view all of our brands and download or request our catalogs!



AFCO Oval Track Racing



AFCO Drag Racing, Muscle, Street Rod, High Performance



Dynatech® Headers



PRO Shocks



Longacre® Racing Products



DeWitts Radiator

## CONTACT INFO

### MAILING ADDRESS

P.O. Box 548  
Boonville, IN 47601

### SALES AND TECHNICAL SUPPORT

800-632-2320  
Open Daily Monday-Friday  
8 a.m. - 5:00 p.m. CST

### PHYSICAL ADDRESS

977 Hyrock Blvd.  
Boonville, IN 47601

### MARKETING PARTNERS



### LIMITED WARRANTY

AFCO Performance Group, LLC will repair or replace any products found upon our inspection to be defective in workmanship or material within 12 months from date of purchase for the original purchaser. Except for the limited warranty set forth herein, AFCO Performance Group, LLC makes no warranties either expressed or implied, written or oral, with regard to the products including, without limitation, any warranty of merchantability or fitness for a particular purpose. In no event shall AFCO Performance Group, LLC be liable for any special, incidental or consequential damages, or any other damages whatsoever arising out of or connected with the use or misuse of the products. Purchasers acknowledge and agree that no person, entity or agent of AFCO Performance Group, LLC has any authority to make any statement contrary to this disclaimer and that any warranty statements or representations allegedly made on behalf of AFCO Performance Group, LLC by any such person, entity or agent are void. AFCO Performance Group, LLC products are not D.O.T. approved or intended for street use. Purchasers are relying solely on their own skill and judgment to select, purchase and use suitable products and assume all responsibility and risk with regard thereto.

© Copyright 2019 AFCO Performance Group • Printed in the U.S.A.

This catalog may not, in whole or in part, be copied, photocopied, reproduced, or converted to any electronic or machine-readable form without written consent of AFCO Performance Group.

# UltimateM.com

Visit us today to order a complete car and purchase parts for all your quarter midget needs!



### **VISIT LONGACRE® ONLINE.**

Longacre® Racing Products has been the racing market's leading manufacturer of gauges, scales, specialty tools, and chassis setup equipment since its inception in 1978. The Longacre® brand of Computerscales® can be seen throughout all levels of racing. Find us online at LongacreRacing.com.



### **FOLLOW US ON FACEBOOK.**

For the latest news from Longacre® on new product development, tech tips, race results, how-to videos, product videos, and industry news, find us online at Facebook.com/LongacreRacing.



**WWW.LONGACRERACING.COM**

Distributed by:  
**WINNING**  
PROMOTIONS

P.O. Box 548, Boonville, IN 47601

977 Hyrock Blvd., Boonville IN 47601  
Ph: 800-423-3110 Fax: 360-453-2031