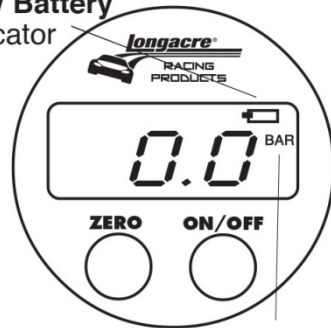


Longacre®**Pro Digital Tire Pressure Gauge 0-4 BAR**

Monroe, WA · 360 453 2030 · www.longacreracing.com

Racing ProductsLow Battery
indicator

Units

Quick Start Instructions

- 1) Turn gauge on and push **ZERO** button if needed
- 2) Firmly press the chuck onto your valve stem to create a tight airless seal
- 3) Read your tire pressure – Reads to .01 BAR
- 4) To release air from your tire simply push the release valve button just below the gauge head
- 5) Continue until desired pressure is obtained

Do Not Exceed Maximum Pressure of 4 BAR**Gauge Instructions**

- **AUTO SHUTOFF** – Gauge shuts off automatically when not in use (pressure changes) and can be set by the user.
 1. Turn the gauge on
 2. Press and hold the **ON/OFF** button for a few seconds until the display changes and starts flashing
 3. Tap the **ON/OFF** button to scroll through the shutoff time options until you find the one you want (30/60/90/180 seconds)
 4. Gauge will return to normal function after 3 seconds and store your choice
- **BATTERY REPLACEMENT** – Battery indicator is located on the upper right side of the display. When needed replace with 2 quality AAA alkaline batteries. Pull back the rubber bumper to access the battery door on the back of the gauge.
- **CONVERTING TO ENGLISH** – The gauge can read pressure in psi, BAR & kPa as set by the user.
 1. Turn the gauge on
 2. Press and hold the **ZERO** button for a few seconds until the display starts flashing
 3. Tap the **ZERO** button to scroll through the options (units are displayed on the right side) until you find the one you want (psi, BAR, kPa)
 4. Gauge will return to normal function after 3 seconds and store your choice
- **CHANGING YOUR CHUCK** - The gauge comes installed with a swivel angle chuck and includes an alternate ball chuck. Ball chuck requires 3/4" wrench. Angle chuck requires 5/8" wrench.
 1. With a wrench and a pair of pliers or vice grips, separate the chuck from the serrated portion of the hose end
 2. When re-installing the chuck you may want to add some Teflon tape to the threads. We recommend using a rag to protect the serrated portion before using your pliers.

DO NOT DROP THE UNIT OR GET IT WET. AVOID EXPOSURE TO STRONG ELECTRO OR MAGNETIC FIELDS. (Ex. Caster/Camber gauge magnets)

EXCEEDING THE MAXIMUM PRESSURE RATING OF 4 BAR MAY DAMAGE THE GAUGE.

GAUGE OPERATING TEMPERATURE RANGE: 0-54° C